

ALABAMA UNIFIED JUDICIAL SYSTEM



FY 2007 ANNUAL REPORT & STATISTICS





Fiscal Year 2007 Annual Report

Contents

Letter of Transmittal.....	3
The Unified Judicial System	4
The Unified Judicial System—Structure and Jurisdiction	5
The Supreme Court of Alabama	6
Alabama Court of Criminal Appeals	9
Alabama Court of Civil Appeals	13
Supreme Court and State Law Library	16
The Administrative Office of Courts	17
Budget of the Judiciary	27
Judicial Inquiry Commission.....	28
Court of the Judiciary	29
Circuit, District, Municipal, and Probate Courts.....	30
Alabama Judicial Circuits	31
Circuit Court Caseload Statistics.....	Table 1
District Court Caseload Statistics.....	Table 2
Jury Trials as a Percent of Caseload Dispositions.....	Table 3
Jury Expenses.....	Table 4
Jury Costs per Trial.....	Table 5
Municipal Court Caseload Statistics.....	Table 6

PUBLISHED BY:
ALABAMA ADMINISTRATIVE OFFICE OF COURTS
PUBLIC INFORMATION OFFICE
300 DEXTER AVENUE
MONTGOMERY, ALABAMA 36104-3741
334-242-0300

*THE FISCAL YEAR FOR THE UNIFIED JUDICIAL SYSTEM OF ALABAMA IS FROM OCTOBER 1 THRU SEPTEMBER 30.



ADMINISTRATIVE OFFICE OF COURTS

300 Dexter Avenue
Montgomery, Alabama 36104-3741
(334) 954-5000

Sue Bell Cobb
Chief Justice

Callie T. Dietz
Administrative Director of Courts

May 5, 2008

Chief Justice Sue Bell Cobb
Supreme Court of Alabama
Judicial Building
300 Dexter Avenue
Montgomery, AL 36104

Dear Chief Justice Cobb:

In accordance with §12-5-10, Code of Alabama, 1975, I am pleased to submit on behalf of the Administrative Office of Courts, the Fiscal Year 2007 Annual Report of the Alabama Unified Judicial System.

This report is an overview of events and a compendium of statistical data for the period from October 1, 2006, through September 30, 2007. In depth trial court statistical data is also included in the report.

The accomplishments made during the Fiscal Year 2007 reflect the dedication of judges and other court officials and employees to the administration of justice and the management of judicial processes.

Sincerely,

Callie T. Dietz
Administrative Director of Courts

CTD:kc

Alabama's Unified Judicial System

The Judicial Article Implementation Act (Act 1205) of 1975 revised the Alabama Court System and prescribed the pattern for its operation.

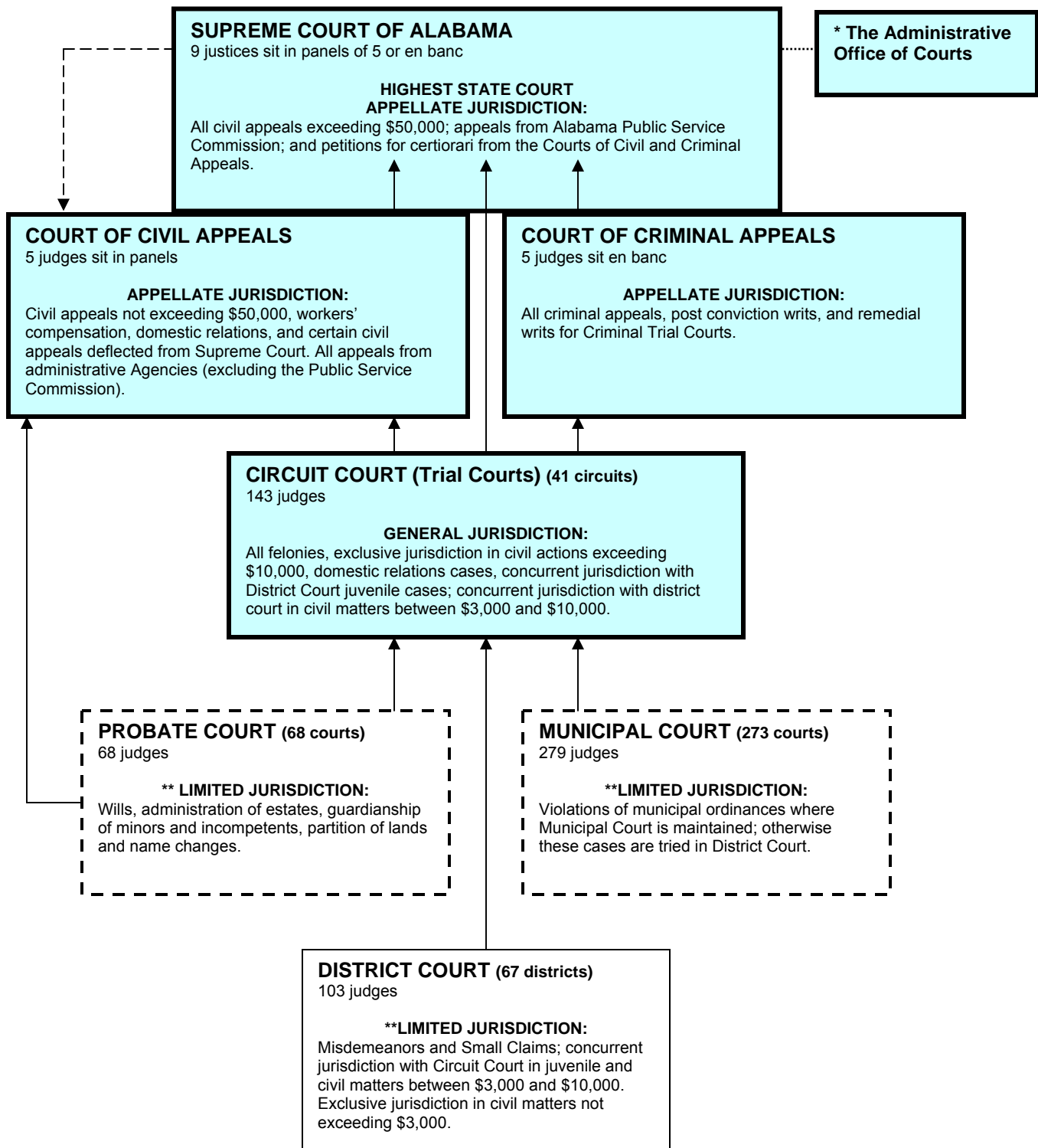
The major changes included:

- Over 400 trial courts were reorganized into a unified system.
- Judges were required to be lawyers (Probate Judges excluded).
- Uniform jurisdictions were established for all trial courts.
- Judges were prohibited from re-election or appointment after age 70.
- Authority was granted to the Supreme Court to adopt rules pertaining to the administration of courts governing practice and procedure.
- Provisions provided for the adoption of "Canons of Judicial Ethics."
- Provisions were made for the flexible assignment of judges.
- A central judicial administration system was built into the Constitution.
- Provisions were made for a Judicial Compensation Commission.
- A Judicial Inquiry Commission and a Court of the Judiciary were created.



Amendment 328 of the Alabama Constitution of 1901 further provided for the exclusive judicial power of the State to be vested in a Unified Judicial System, to become effective January 17, 1977. Today, the Alabama Supreme Court, Court of Criminal Appeals, Court of Civil Appeals and the Administrative Office of Courts all operate from within a single location in Montgomery, Alabama.

Alabama's Unified Judicial System Structure & Jurisdiction



* Under the administrative authority of the Chief Justice.

** Appeals from courts of limited jurisdiction go to Circuit Court for trial de novo (a new trial).

THE SUPREME COURT OF ALABAMA



The Alabama Supreme Court, Alabama's court of last resort, is composed of a Chief Justice and eight Associate Justices. All members of the Court are elected in statewide elections to six-year terms. The Supreme Court has general supervisory authority over all courts in the State and power to review any judgment of these courts. In addition, the Supreme Court has the authority to make administrative rules and regulations to ensure the efficient and speedy administration of justice and to make and promulgate rules governing practice and procedure in all courts in the state.

To facilitate the decision-making process, the Supreme Court has traditionally been divided into two divisions with a panel of four justices each. The Chief Justice sits on both divisions. If the five members of a division disagree on the disposition of a particular case, the case must be submitted to the entire Court for resolution. The Court's internal rules require consideration by the full Court of petitions for certiorari review in capital cases in which the death penalty is imposed, cases declaring a statute unconstitutional, advisory opinions to the Governor or the Legislature, utility rate cases; cases overruling a previous decision of the Supreme Court, and of petitions for certiorari review in instances where the Supreme Court is reversing a judgment of the Court of Criminal Appeals or the Court of Civil Appeals.



Sue Bell Cobb
Chief Justice

The Supreme Court disposed of 659 appeals and 722 petitions for writ of certiorari during FY 2007. The Court considered 367 petitions for writ of mandamus, 3 certified questions, and 16 miscellaneous petitions for a total of 1,804 cases disposed. There were 237 appeals deflected to the Alabama Court of Civil Appeals pursuant to §12-2-7(6); 31 appeals were transferred because they were filed with the wrong appellate court, leaving 391 appeals pending before the Supreme Court. Of those appeals, 99 were dismissed for such reasons as being untimely filed, lack of prosecution, etc. A total of 69 appeals were disposed through the appellate mediation program.

Of the 135 appeals referred to appellate mediation during the time period from October 2, 2006 through September 29, 2007, 73 or 54.07% were settled by appellate mediation.

Appellate Mediation in the Supreme Court of Alabama and the Court of Civil Appeals

In January 2004, the Supreme Court of Alabama initiated an appellate mediation program for any civil case within the jurisdiction of the Supreme Court of Alabama or the Court of Civil Appeals and adopted the Alabama Rules of Appellate Mediation. The program screens civil cases, identifying those cases appropriate for mediation. If a case is referred to mediation, mediation is mandatory but settlement is not. This program gives the parties an opportunity to discuss alternatives to the judgment entered by the trial court and possible ruling by the appellate court. Rather than have a situation where one party wins the other loses, the parties can work out a solution amenable to both. Because cases are usually referred to mediation prior to the record preparation and briefing, mediation has the added benefit of reducing the cost of litigation.

The program has proven to be a great success. Of the Supreme Court cases referred to mediation since the inception of the program in January 2004, an average of 50% of the cases settled. Of the Court of Civil Appeals cases referred, an average of 53% settled.

ALABAMA SUPREME COURT (Filings and Dispositions Report 10/02/2006 - 09/30/2007)

Case Type	Cases Filed	Cases Disposed	Avg. Days to Disp.*	Thruput	Pending to Start	Pending at End	Net Change
Direct Appeal	677	659	235	97.34	480	499	19
Certified Question	3	3	298	100.00	3	3	0
Petition for Writ of Certiorari to the Court of Criminal Appeals	503	522	92	103.77	149	130	-19
Petition for Writ of Certiorari to the Court of Criminal Appeals (Death Penalty)	19	21	1,411	110.52	87	85	-2
Petition for Writ of Certiorari to the Court of Civil Appeals	202	179	122	88.61	73	95	22
Miscellaneous Criminal							
Petition	4	3	37	75.00	0	1	1
Miscellaneous Civil Petition	4	6	126	150.00	3	1	-2
PET: UNKNOWN	8	7	48	87.50	1	2	1
Petition for Permission to Appeal	25	37	234	148.00	24	12	-12
Petition for Writ of Mandamus: Criminal	121	109	66	90.08	42	54	12
Petition for Writ of Mandamus: Civil	262	258	145	98.47	99	104	5
REPORT TOTAL	1,828	1,804	255	98.68	961	986	25

Cases Disposed by Deflection: 237	13.30%	Cases Disposed Through Mediation	69
		Cases Disposed After Reinstatement From Mediation	232

# of Decisions Without Opinion:	1712	# of Rehearing's FILED:	113	# of Reinstated Cases:	15
# of Decisions With Opinion:	274	# of Rehearing's RULINGS:	107	# of Reinstated Cases Disposed:	15

*Calculations based on the # of days from the start of the case to the finalizing entry in the docket, normally the issuance of the Certificate of Judgment.



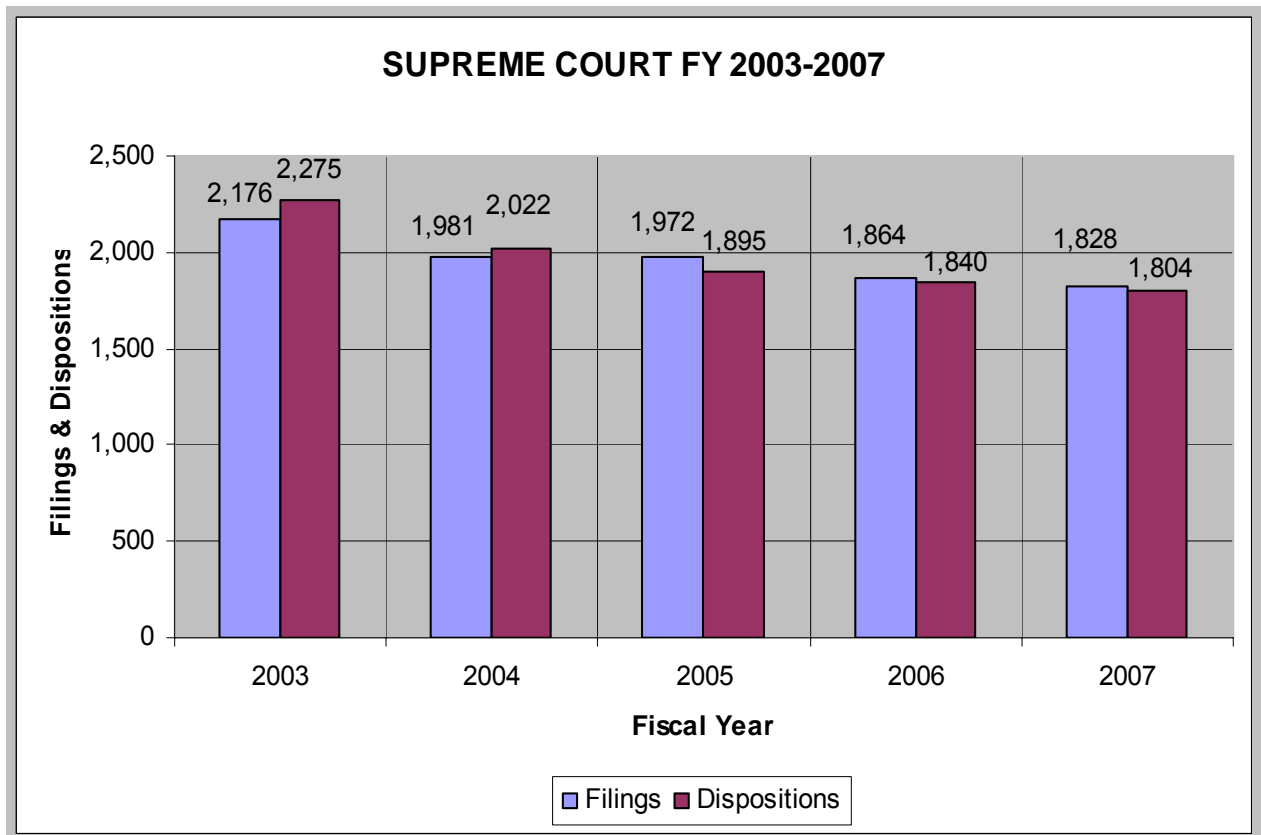
Alabama Supreme Court Justices

Seated Left to Right:

Justice Thomas A. Woodall
 Justice Harold F. See, Jr.
 Chief Justice Sue Bell Cobb
 Justice Champ Lyons, Jr.
 Justice Lyn Stuart

Standing Left to Right:

Justice Tom Parker
 Justice Patricia M. Smith
 Justice Michael F. Bolin
 Justice Glenn Murdock



ALABAMA COURT OF CRIMINAL APPEALS



Court of Criminal Appeals Courtroom

The Alabama Court of Criminal Appeals is a five-judge court having exclusive appellate jurisdiction of all criminal cases, including all post-conviction writs arising there from. The Court has authority to issue remedial writs necessary to give it general superintendence and control over all trial courts exercising jurisdiction in criminal proceedings. Judgments of the Court of Criminal Appeals are subject to discretionary review by the Alabama Supreme Court.

Filings - During the 2007 Term, the Court of Criminal Appeals had a total caseload of 3,414 cases, of which 2,287 were new filings. The 2,287 new filings in the 2007 Term represent a .2% decrease in filings from the previous term and a 5.5% drop in filings from the number of filings five years earlier. Even though filings in the 2007 Term were slightly less than the number of filings in the 2006 Term, with 457 filings per judge in the 2007 Term, the Court of Criminal Appeals had the second highest per judge intermediate appellate court caseloads in the nation - almost two-and one-half-times that of the national average of 192 filings per judge, according to the most current statistics available from the National Center for State Courts (current through 2005).

Dispositions - In the 2007 Term, the Court of Criminal Appeals disposed of 2,106 cases, 1,641 appeals and 465 petitions. The Court's throughput for the 2007 Term was at 92.1%. The Court began the 2007 Term with 1,127 pending cases, a 3.8% decrease from the beginning caseload of the prior term, and the third lowest beginning caseload for the Court in the last 17 years.

Decisions - The Court of Criminal Appeals issued 1,308 decisions in submitted appeals during the 2007 Term. Of these decisions, judgments were affirmed in 1,069 appeals; judgments were reversed and the causes were remanded in 47 appeals; judgments were reversed and the causes were rendered in two appeals; 50 appeals were dismissed; 131 appeals were remanded to the trial courts with directions; two appeals were affirmed in part and reversed in part, and seven appeals were transferred to other courts. Written opinions were released in 129 appeals and in seven original petitions. Memorandum decisions were released in 1,048 appeals. Out of the 465 original petitions that were disposed in the 2007 Term, nine petitions (1.9% of the total) were granted by the Court either in whole or in part.

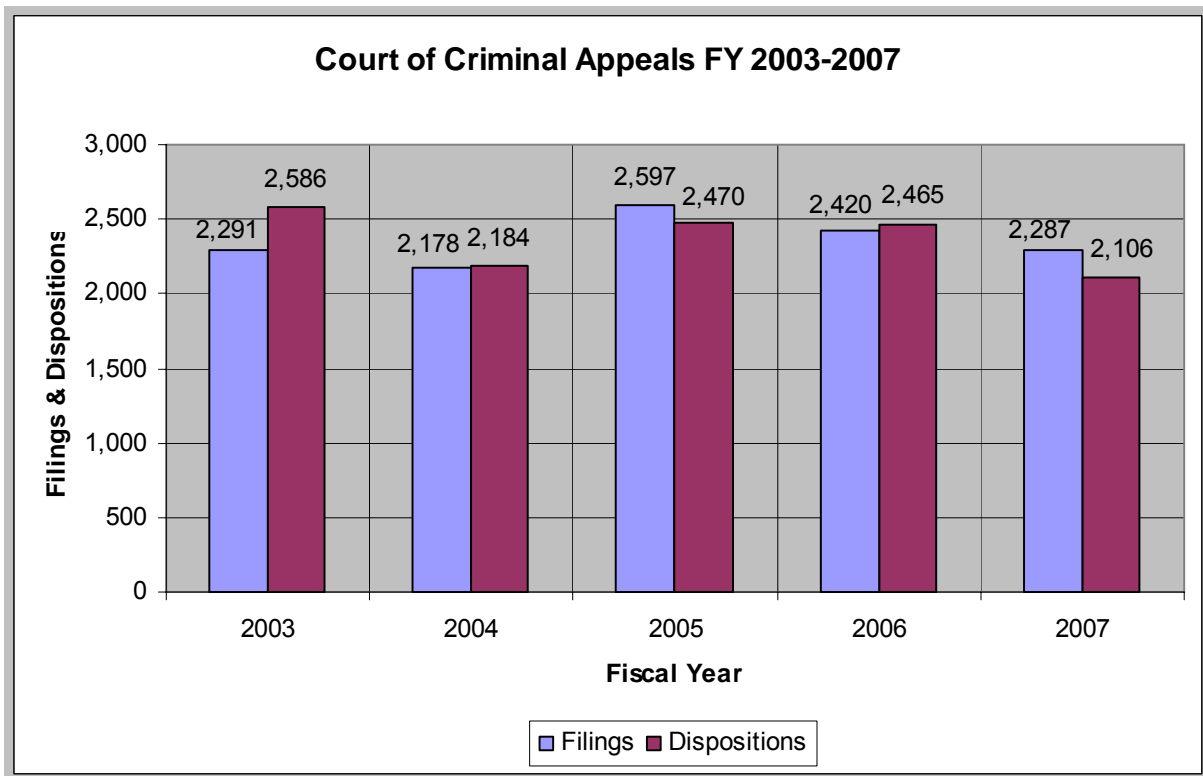
Time Standards - In 1989, the Supreme Court, by order, set as a goal a 280-day time standard that ran from notice of appeal or the filing of a petition to the initial decision. In April 1995, the original goal was modified to conform to the Time Standards Reference Models recommended by the American Bar Association. The current goal is to issue rulings in 75 percent of all cases within 290 days from their start and in 95 percent of all cases within 365 days. In the 2007 Term, 88.4 percent of all the initial decisions by the Court of Criminal Appeals were released within the 290 days, thus surpassing the 75% goal for the 290-day period by 13.4%, and 95.3 % were released within 365 days, thus surpassing the 95% goal for the 365-day period by .3%. In the 2007 Term, the average time from start to the initial decision increased by 13 days, from 127 days in the 2006 Term, to 140 days in the 2007 Term. The average time from start to initial decision in submitted cases increased by 21 days, from 202 days in the 2006 Term, to 223 days in the 2007 Term.



Alabama Court of Criminal Appeals

Left to Right:

Judge Alisa Kelli Wise
 Judge W.H. "Bucky" McMillian
 Presiding Judge Pamela Willis Baschab
 Judge Greg Shaw
 Judge Samuel Henry Welch



COURT OF CRIMINAL APPEALS FILINGS AND DISPOSITIONS FROM FY 2003 - 2007

	<u>FY03</u>	<u>FY04</u>	<u>FY05</u>	<u>FY06</u>	<u>FY07</u>	% Change 2003-07	% Change 2006-07
Cases From Prior Term	1,336	1,039	1,038	1,171	1,127	(15.6%)	(3.8%)
New Filings	2,291	2,178	2,597	2,420	2,287	(.2%)	(5.5%)
Cases Disposed	2,586	2,184	2,470	2,466	2,106	(18.6%)	(14.6%)
Cases Carried Over	1,041	1,033	1,165	1,125	1,308	25.6%	16.3%

COURT OF CRIMINAL APPEALS
ANALYSIS OF FILINGS BY CASE TYPE
FY 2007 Term

Appeals	# of Cases	% of Appeals	% of Total Filed
Convictions Appealed (Death)	15	.8%	.7%
Convictions Appealed (Municipal)	17	.9%	.7%
Convictions Appealed (Other)	592	32.5%	25.9%
Rule 32 Appeals (Death)	10	.5%	.4%
Rule 32 Appeals (Non-Death)	703	38.6%	30.7%
Juvenile Appeals	15	.8%	.7%
Probation Revocation	97	5.3%	4.2%
Restitution Order	0	0%	0%
Mandamus Appeal	2	1%	1%
Certiorari Appeal	35	1.9%	1.5%
Habeas Appeal	54	3%	2.4%
State Pretrial Appeal	32	1.8%	1.4%
Contempt Adjudication	0	0%	0%
Motion to Reconsider Sentence	168	9.2%	7.3%
Other	80	4.4%	3.5%
Total No. Appeals Filed	1,820		79.6%
Original Petitions	467		20.4%
Total Cases Filed	2,287		

COURT OF CRIMINAL APPEALS
ANALYSIS OF DISPOSITIONS
FY 2007 Term

Appeals	# of Cases	% of Appeals	% of Total Dispositions
Affirmed	1,075	65.5%	51%
Reversed & Remanded	47	2.9%	2.2%
Reversed & Rendered	1	.1%	0%
Affirmed in Part/ Reversed in Part	4	.2%	.2%
Affirmed in part/ Dismissed in part	1	.1%	0%
Dismissed After Submission	47	2.9%	2.2%
Transferred by Order	30	1.8%	1.4%
Dismissed Prior to Submission	436	26.6%	20.7%
Total Appeals Disposed	1,641		77.9%
Petitions	# of cases	% of Petitions	% of Total Dispositions
Granted	9	1.9%	.4%
Denied/Dismissed	428	92%	20.3%
Granted in Part/Denied in part	0	0%	0%
Remanded with Directions	1	.2%	0%
Transferred	23	5%	1.1%
Total Petitions Disposed	465		22.1%
Total Dispositions	2,106		

ALABAMA COURT OF CIVIL APPEALS



Court of Civil Appeals Courtroom

The Court of Civil Appeals, composed of a presiding judge and four associate judges, was created by the Alabama Legislature in 1969. The Court has original appellate jurisdiction in all civil appeals where the amount in controversy does not exceed \$50,000; in all appeals from administrative agencies, other than the Alabama Public Service Commission; in all appeals in workers' compensation cases; and in all appeals in domestic relations cases, including annulment, divorce, adoption, and child custody. All decisions of the Court are made en banc. Each judge is required to review each case submitted to the Court.

For FY 2007, the Court of Civil Appeals reported a total caseload of 1,978 cases. This figure includes 1,200 new filings and 778 cases that, at the close of the previous term, were not ready for submission, were on rehearing, or were on review to the Supreme Court of Alabama.

Filings - Case filings in FY 2007 increased by 10% from FY 2006. For the five-year period, FY 2003 through FY 2007, filings decreased by 2.44%.

The total caseload of the court increased by 6.42% from the previous year. During FY 2007 the court disposed of 1,183 cases: 278 were decided with opinion; 345 affirmed without opinion and 560 disposed before submission. The average time from notice of appeal to written opinion was 265 days, compared to 294 days for FY 2006.

Dispositions – The Court of Civil Appeals disposed of 1,183 cases. Of this number, 278 cases or 23.49% were decided with written opinions.

Of the 640 cases disposed by opinion and summary affirmance, the Court affirmed the judgment of 66.41%; reversed the judgment in 15%; in 4.38% of the cases the judgment was affirmed in part and reversed in part, and 14.22% were disposed by dismissal or other reason.

Applications For Rehearing - An application for rehearing is the method by which one, or both, of the parties request the court to reconsider its earlier decision in a case. Of the 640 cases that were disposed by submission and decision, 154 applications for rehearing were filed. Approximately 83.78% of the cases on rehearing had no change.

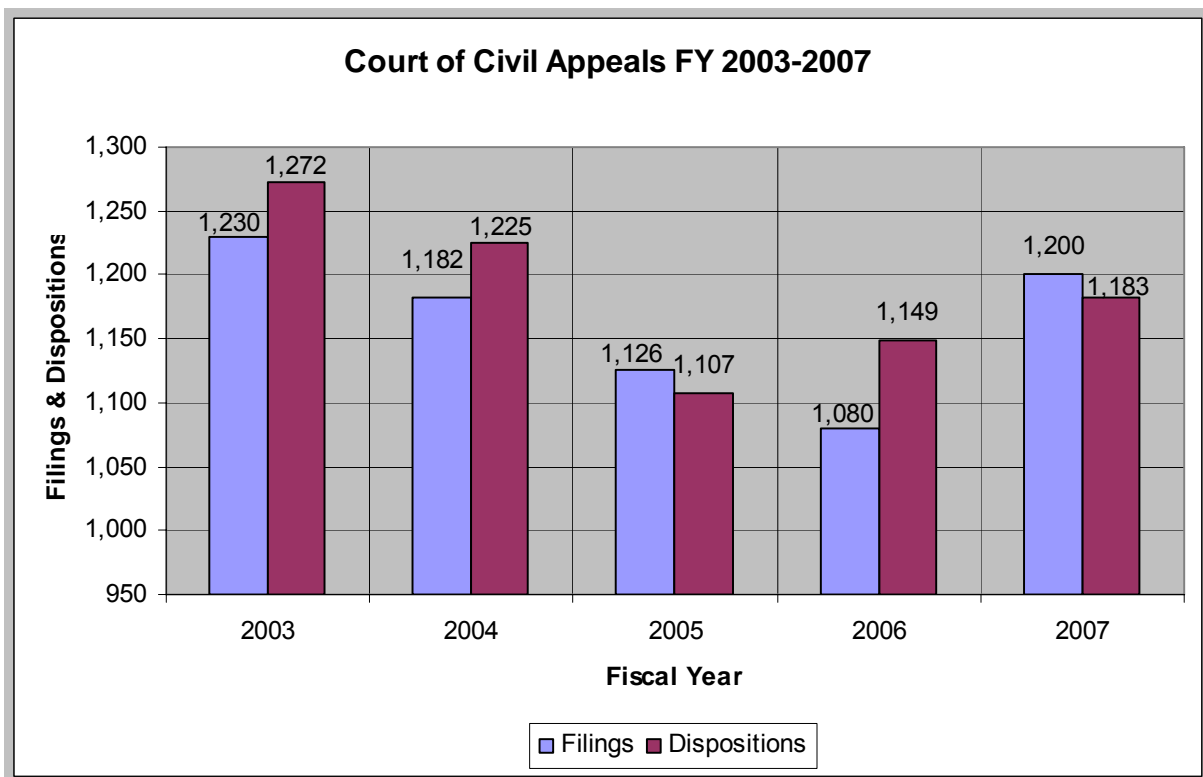
Review by Supreme Court of Alabama-The Supreme Court ruled on 171 petitions for certiorari from the Court of Civil Appeals during FY 2007. Approximately 95.91% of those decisions were upheld by the Supreme Court.



Alabama Court of Civil Appeals

Seated Left to Right:
 Judge Craig Sorrell Pittman
 Presiding Judge William C. Thompson
 Judge Tommy Bryan

Standing Left to Right:
 Judge Terri Willingham Thomas
 Judge Terry A. Moore



Alabama Court of Civil Appeals Filings and Dispositions FY 2003 - 2007									
	FY 2003	FY 2004	FY 2005	FY 2006	FY 2007	Changes FY 2006 – FY 2007		Changes FY 2003 – FY 2007	
						# of cases	%	# of cases	%
Cases Carried Over From Previous Year	837	795	752	771	702	-69	-8.9	-135	-16.1
New Filings	1,230	1,182	1,126	1,080	1,200	120	1.1	-30	-2.44
Total Case Load	2,067	1,977	1,878	1,851	1,902	51	2.8	-165	-7.98
Cases Disposed	1,272	1,225	1,107	1,149	1,183	34	2.96	-89	-6.99
Cases Carried Over to Next Year	795	752	771	702	719	17	2.42	-76	-9.56

Alabama Court of Civil Appeals Cases Docketed and Disposed FY 2007	
Cases Docketed	
Cases Carried Forward FY 2005-06	702
New Cases	1,200
Total Cases Pending Before the Court	1,902
Cases Disposed	
Written Opinion	278
Without Written Opinions	905
Total Cases Disposed	1,183
Cases Carried Forward to Next Term	719

Alabama Court of Civil Appeals Types of Dispositions With Decisions FY 2007			
Types of Dispositions With Decisions	# of Cases	# of Cases Without Opinions	% of Total Decisions
Affirmed	80	345	66.4
Reversed	96	0	15.0
Affirmed in Part/Reversed in Part	28	0	4.4
Other	74	17	14.2
DECISIONS	278	362	100.00
TOTAL OF DECISIONS	640		
Note: Decisions reflect both cases with opinion and affirmed without opinion. (Disposed)			
Note: 100 percent submitted on brief; Zero orally argued. (Disposed)			

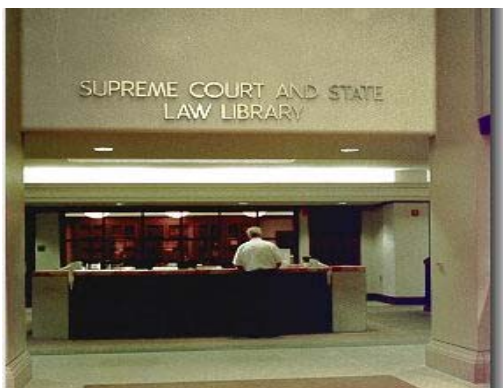
SUPREME COURT AND STATE LAW LIBRARY

The Alabama Supreme Court and State Law Library is the oldest law library in Alabama. Established in 1828 as the Library Society of the Bench and Bar of the Supreme Court, it was a private, nonprofit organization with the purpose of providing a library for the "exclusive use of the Bench and Bar of the Supreme Court of the State." In the late 1800's, when the law library became a state agency, it was Alabama's largest research library and continues that tradition today, serving the Alabama Supreme Court, the Courts of Criminal and Civil Appeals, and all citizens of Alabama.

The Law Library has approximately 235,000 volumes in its collection, making it the second largest law library in the State. The Library is also one of the oldest U.S. Government Depository libraries in the United States, having been designated a depository in 1884. Currently, the Law Library occupies approximately 38,000 square feet. It is a public law library, and its hours of operation are 8:00 a.m. to 6:00 p.m., Monday through Friday. The Law Library collection contains all of the reported decisions of the state and federal appellate courts in the United States, and the statutes of all 50 states and the District of Columbia, plus Acts of Congress, the United States Code, and the regulations of the various agencies of the U.S. Government. The Law Library's legal periodical collection is one of the best in the State with more than 1,000 titles, while its rare book collection is considered one of the finest in the Southeastern United States. Unique to the collection are the briefs of Alabama Supreme Court cases beginning in 1965, and the papers of the Alabama Judicial College.

Beyond the role of the traditional library, the Supreme Court and State Law Library continues to pursue a strategic plan to remain on the forefront of technology. To this end, the Law Library provides public access to Westlaw and Lexis, computer-assisted legal research services, to all users so that they have access to the most sophisticated legal research engines available. In this same way, the Law Library provides Westlaw and Lexis access to the entire judicial branch of government so that judges, clerks, and other judicial branch employees will have access to legal information at their fingertips. Additionally, the Law Library has its own computerized public access catalog known as Aladdin, which includes the online catalogs of the Jefferson County Public Law Library, the Montgomery County Public Law Library, and the Elbert Parsons Public Law Library in Huntsville. Aladdin can be accessed from the Law Library web site, www.alalinc.net.

The Law Library manages a state-of-the-art computer training lab equipped with workstations to accommodate an instructor and up to 18 students. The Law Library also maintains Alalinc, an information service providing access to electronic copies of Alabama's appellate court opinions as they are released. Opinions are fully searchable using an advanced search engine that allows users a large range of search capabilities.



The Law Library showcases the Heflin-Torbert Judicial Building and the history of the courts through a public education program which includes the museum exhibits, plus guided tours of the Judicial Building. In 2007, approximately 15,000 people, primarily 4th graders studying Alabama history and civics, visited the Judicial Building.

The Administrative Office of Courts

The Chief Justice of the Alabama Supreme Court is the chief administrative officer of the State's court system and is authorized to appoint an Administrative Director of Courts, and other personnel, to assist in the performance of administrative responsibilities. This constitutionally created administration overseeing Alabama's Unified Judiciary is called the Administrative Office of Courts (AOC).



Callie T. Dietz, Administrative Director of Courts

The Alabama Unified Judicial System is a state-funded court system consisting of the Supreme Court and two intermediate courts of appeal, the Court of Civil Appeals and the Court of Criminal Appeals. The system also includes the trial courts of general jurisdiction (the Circuit Courts) and the courts of limited jurisdiction (the District Courts, the Probate Courts, and the Municipal Courts).

The Administrative Office of Courts (AOC), under the direction of the Administrative Director of Courts, is charged with providing the centralized, state-level administrative support necessary to the operation of the State court system, which includes the development of improved procedures and systems to increase the operational capacity of the courts, the collection and dissemination of information necessary for the development of policy and the efficient operation of the courts. Alabama was one of the first states in the nation to have a unified state court system with uniform procedures and centralized administrative services. The Unified Judicial System of Alabama has been in existence since 1977.

The Administrative Office of Courts carries out its responsibilities through a network of specialized divisions. This necessary link within the court system successfully implements plans addressing the training, educational and developmental needs of officials and employees of the Unified Judicial System. These tasks are implemented in part by and through the Alabama Judicial College, along with the support of statewide technological expertise and implementation of the Court Services and Information Technology Division. The AOC also houses basic support departments such as Human Resources and Finance, but there exists more specialized departments such as the Family Court Division, the Legal Division, the Judicial Study Commission and the Public Information Office. The AOC is most specifically made up of talented individuals from many walks of life serving the needs of their fellow citizens.

Alabama Judicial College

The Alabama Judicial College, a division of the Administrative Office of Courts, is charged with the implementation of a comprehensive plan that addresses the educational, developmental and training needs of members of the Unified Judicial System. Continuing education and training programs administered by the Alabama Judicial College recognize the career development needs of court officials and employees. The College develops and coordinates over 60 meetings on a yearly basis which include on-site and off-site conferences, regional trainings and seminars for officials and employees of the circuit, district and municipal courts. Since its inception the College has followed the *Conceptual Model* which emphasizes continuing judicial education for the proper administration of justice.

The Alabama Judicial College staff work with each court association to develop agendas and training outlines. They also offer orientation programs for judges and clerks. The College coordinates monthly calendars of internal and external training opportunities, events, and meetings. They schedule classrooms and provide all logistical support for meetings in and outside the judicial building. The Judicial College provides speakers for national and state speaker bureaus and procures grants for faculty skills training.

In FY 2007, the Judicial College hosted fifteen (three-day) conferences which enrolled 1,800 court officials. The College also had fifty-one In-house training meetings which serviced over 1,200 court officials. The largest amount of officials serviced this past year was re-certification of Guardian Ad Litem officials. We saw a increase of 48% from the previous year.

In conclusion, the College awarded thirty-one Judicial Certificates to Circuit and District Judges for continuing education. Also, there were eighteen Circuit Clerks who received certificates in FY 2007. The goal is to have 75% of elected Court Officials reach the 100 hour award by 2009.

Court Services and Information Technology Division

The Court Services Division provides four areas of service to the AOC. First, this section supports the Accountability Court Programs of Court Referral and Drug Court. Second, the Child Support section collects and disburses child support payments. Third, is the Trial Courts Section offering accounting/bookkeeping support, help desk, a traffic citation call center, and fourth is the Municipal Courts section which gives assistance to State Municipal Courts and the UJS Magistrate program.

The Information Technology Division is responsible for the development and maintenance of automation within the UJS. The sections in this area include; Applications programming, Information Technology Support, Mainframe, Management Information Systems, and Networking.

Accountability Courts

The relationship between substance abuse, criminal activity, violence, increasing court caseloads, prison overcrowding, death and injury are well documented. Costs associated with these problems are staggering in terms of financial hardship as well as human tragedy.

The Court Referral Officer Program began in 1985 as a pilot program to assist judges in early identification and placement of DUI offenders as one method of reducing the devastating problem of drunk driving. Since the implementation of the Mandatory Treatment Act of 1990, Court Referral Officers have provided services to defendants in a broader spectrum of cases related to alcohol and drug use or abuse.

Court Referral Officers (CROs) are a key ingredient in Alabama's comprehensive approach to the management of cases involving substance abuse or other related issues. Utilizing the Operational Screening Criteria as well as validated testing instruments, CROs provide a thorough evaluation and make appropriate recommendations for each defendant. This important information will ensure placement of each defendant in the most appropriate program to supplement traditional judicial sanctions.

Local Court Referral Programs were developed to assist defendants with alcohol and drug abuse-related offenses with education and/or treatment referral services and to be able to act as "resource brokers" within local communities. These programs have been designed to be used in conjunction with court orders and not as a replacement for judicial sanctions.

In FY 2007, 30,720 defendants were evaluated and referred for education or treatment. Of these defendants, 7,959 were placed in the Level I education program, 12,705 were placed in the Level II education programs and 8,641 were referred to Level III outpatient or inpatient treatment programs. The AOC certifies and contracts with 29 agencies to provide education and 86 CROs to evaluate defendants and provide monitoring sessions throughout the state.

Drug Courts

Chief Justice Cobb has pledged that the judiciary is able and willing to be a partner in remedying the enormous problem of prison overcrowding within the state. Model Drug Courts are one way of dealing with this problem. Drug Courts represent the coordinated efforts of the judiciary, prosecution, defense, probation, law enforcement, mental health, social services, and the treatment community to actively and forcefully intervene and break the cycle of substance abuse, addiction, and crime.

Currently there are 38 Drug Courts existing in 37 counties within Alabama, with a goal of adding 26 additional Drug Courts by the end of 2008. Drug Courts are utilized as an alternative sentencing method to; (1) assist non-violent offenders, who have committed offenses while under the influence of alcohol or drugs to be given the opportunity to turn their lives around and (2) make the public safer while reducing the demand for prison space.

Chief Justice Cobb's goal is to have a Drug Court in every county by September 2009. By adding 26 in the near future to the current 38, the goal is well on the way to being accomplished.

Child Support

The Alabama Central Disbursement Division (ACDD) is a division that was established as a result of federal and state law, known as the Welfare Reform Act of 1996. This law required a single location in each state to which employers could send wage withheld child support payments to be processed. In FY 2007, \$159,630,151 was collected and disbursed.

Non IV-D payments (or wage withheld payments processed through the clerk's office and not processed through the Department of Human Resources) will be receipted at a central location and will be disbursed by the Alabama Central Disbursement Division. Payments will be receipted one day and the payment will be disbursed and mailed to the recipient the next day. Inquiries about child support are handled by the ACDD. The ACDD does not establish, support or enforce child support orders and does not maintain court files or answer questions about cases.

Trial Courts

The Trial Courts Section of the Court Services/IT Division serves trial courts through the SJIS Help Desk, the Traffic Call Center, the Income Tax Intercept Program and the Accounting/Bookkeeping Program.

The Traffic Call Center handled 150,029 calls and collected \$15.5 million dollars in court fines and fees in FY 2007. The Income Tax Intercept Program interacts with the public, as well as the trial courts, in providing information that streamlines the collection of court ordered monies and assists circuit clerk's offices by diverting information inquiries to a central location. In FY 2007, \$1,573,394 dollars was recovered in delinquent court ordered monies through this section.

The SJIS Help Desk and the Accounting/Bookkeeping Program provide technical assistance with the processes of the State Judicial Information System through training, manuals, inquiry's and problem resolution.

Municipal Courts

The Municipal Court Section is located in the Court Services/IT division of the AOC. The Municipal Court Section's primary goal is to provide educational training to municipal court magistrates who are required by law to successfully complete 116 hours of educational credits to become fully certified officers of the court. This educational training consists of an overview of criminal law and administrative procedures. The Municipal Court Section offers four orientation sessions twice annually for new municipal magistrates. This section provides training at AOC sponsored regional seminars and at the University of Alabama's College of Continuing Education. Municipal courts also receive site-visits per request from the Municipal Court Section to ensure that legal and administrative procedures are properly and efficiently followed.

The Municipal Court Section not only provides these services to municipal courts, but has recently extended its educational programs to district court magistrates who are required by law to become certified as well, and assists the SJIS Help Desk with technical and legal issues to the state court system. In addition to processing and maintaining municipal court official appointments, rescindments and oaths of offices, the Section also processes and maintains this information for district court magistrates and warrant clerks.

Applications Programming

This section is responsible for the development and the maintenance of all automated systems supporting the information management needs of the Alabama Unified Judicial System (UJS). This section designs, develops, tests, implements and maintains the mainframe and server based applications that comprise the Alabama Statewide Judicial Information System (SJIS).

Project management functions are provided to judicial system contractors and business partners. On a daily basis this section performs system analysis; develops product specifications; tests, approves and implements new systems; and serves as a mediator between user groups and contractors.

Lastly, this section honors special data processing requests submitted by our users and other agencies. These requests range from ad hoc reports to system-wide enhancements.

Information Technology (IT) Support

This section provides training and support of technology related projects. Typical project management duties include staffing a telephone support desk, training, preparing narrative reports, preparing manuals, creating online tutorials, testing of applications and processing

requirements for application development. IT Support serves as the liaison between the users and the technical staff.

Applications Supported: Alacourt • AlaFile • Alavault • Alapay • E-Appellate • DARRT • DA Desktop • E-Citation/V-Citation • E-Transcripts • DAIS • DAR • DAWC • WMS • AOC Newsletter.

Mainframe

The Mainframe section of the Administrative Office of Courts is responsible for the availability for the Statewide Judicial Information System (SJIS) which handles an average of 1,000,000 transactions per day. Among these responsibilities are making sure the online aspects of our system are available and operating at optimum performance, providing assistance to users concerning report output, maintaining Mainframe equipment at user sites and handling large volumes of mailed output. The Mainframe system is constantly monitored to make sure there are no problems that could affect the SJIS users and others that require information from SJIS. The Mainframe section is responsible for the safety of SJIS data and provides for data integrity and timely backups of all data on a daily basis. The Mainframe section also insures that all Mainframe software is up-to-date and configured properly as well as providing technical support to other sections of the AOC.

Management Information Systems

Management Information Systems provide the support necessary for the day-to-day business operations of the Unified Judicial System both in the trial courts and the Administrative Office of Courts. The Management Information Systems aids the enhancement of administrative functions using technology and coordinates with state agencies regarding sharing of services and information. This division also provides centralized child support processing for the state, which allows for interfacing with the Department of Human Resources. The Management Information Systems makes available public information to the criminal justice community, social and juvenile services and the public as a whole. Management Information Systems offers on-line services to all 67 counties at all court sites, juvenile offices and pardon and parole offices. Finally, Management Information Systems maintains current UJS applications as well as new developments and upgrades.

Networking

Information Technology (IT) Infrastructure management is responsible for the day-to-day operations of the Alabama Unified Judicial System's network and servers, providing services to over 3,000+ users spread over 100+ locations utilizing server and networking resources located at the Alabama Judicial Building Data Center.

Responsible for engineering and managing: Wired and Wireless connectivity (T1s, DSL, MetroE) • Firewalls, Virus, and Spam protection • Servers and Databases • Remote network access via VPN clients • 24/7 monitoring and problem resolution • Authentication and Authorization services through Active Directory • Point-to-Point data connections to outside agencies • Electronic Mail Services

Human Resources Division

The Human Resources Division of the Administrative Office of Courts provides a full range of human resources services to the judicial branch of government and the general public. Direct support is provided to approximately 2,447 Unified Judicial System (UJS) officials and employees. As of December 2007, included are 163 appellate judges and employees, 1,978 trial court officials and employees, 10 Judicial Sentencing Commission employees, and 96 Administrative Office of Courts (AOC) staff.

Personnel Operations

The personnel operations section of this division processes all personnel actions. In FY 2007 more than 6,984 separate actions were processed manually, including appointments, separations, promotions, leave without pay, reclassifications; three and six month probationary paperwork, annual probationary raises, and longevity bonuses, as well as other miscellaneous actions such as tax, address, and name changes. The operations section maintains all employee personnel records and position control for the offices of more than 340 appointing authorities, using an automated information system and periodic reports. This section also audits all UJS payrolls and certifies state service for the annual longevity bonus.

Payroll

The payroll section of Human Resources process daily data entry; timesheets; one-time pays; supplemental pay; restitution checks weekly; mail outs of payroll warrants; tracks payroll warrants, etc., Title IV information; duplicate/cancelled warrants; county supplement; FICA cut offs; W-2 requests throughout the year; court referral officer transactions; JPO fund updates; insurance reimbursement for separated/terminated/retired employees; longevity bonuses; deferred compensation (PEBSO/Nationwide, RSA-1, United Way); funding source/organization code changes; unemployment compensation; insurance billing; direct deposits; employment verifications; retirement contributions and miscellaneous deduction.

Fringe Benefits

The Human Resources Division is responsible for monitoring a leave program (HRDesktop) for approximately 2,194 leave-earning employees and AOC staff. Because leave represents a potential debt of the UJS, the Human Resources Division audits leave accounts annually.

Testing and Recruitment

For FY 2007, 977 applicants took the written court specialist examinations in nine (9) test sites around the state. In addition to maintaining the open and promotional court specialist registers, the division issued numerous special job announcements for positions at the AOC, trial courts, and in the appellate courts.

Equal Employment Opportunity

As of January 1, 2008, there were 413 minorities employed in the UJS. This included 32 elected officials as well as 17 appellate, 330 trial court, and 34 AOC employees. This is 16.9 percent of the total Unified Judicial System work force. The Human Resources Director is also the EEOC Officer for the UJS.

Finance Division

The Finance Division, under the leadership of the Finance Director is comprised of two sections, Budgeting & Accounting and Purchasing & Property. The Finance Division provides technical financial assistance to the trial courts, and serves as a liaison with the appellate courts regarding fiscal matters.

Budget and Accounting

This section is responsible for annual budgets, operating plans, revenue systems and juror payment systems. Grants awarded to the Administrative Office of Courts and trust accounts are administered by the grants accountant and the various project managers, in accordance with the appropriate policies and procedures. This section is also primarily responsible for the execution of routine accounts payable and accounts receivable transactions. Expenditure vouchers are electronically prepared to include payment for routine office supplies and equipment, travel vouchers, county expense claims and agreements, utilities, professional services contracts, building management costs, and personnel benefit costs. In FY 2007 1,762 Jury Trials were reported at an expense of \$1,896,839. This is a 28% increase from the previous year (table 4). Jury costs per trial were \$1077.

Purchasing and Property Management

This section is responsible for the automated processing of requests for supplies, forms, equipment, publications, postage and postal equipment, repairs, maintenance of equipment, office equipment rentals, leases, education conference registration, vehicle maintenance and varied services in accordance with State and local procurement procedures for UJS offices statewide.

During FY 2007, the cost of procurement actions for general repairs and restorations was \$255,701; annual contracts to include rentals and leases costs were \$5,037,431; supplies including general commodities, computer supplies and equipment, costs were \$4,898,435; and equipment purchases to include furniture, computers, printers, costs were \$2,071,362.

Family Court Division

The Family Court Division provides services in six different, but related areas for the state judicial system. The goal of this division is to provide a wide array of services to assist families coming into the court system in Alabama.

Family Court

The concept of a unified family court is to place cases dealing with juvenile and family law in one court in order to serve the families more effectively and efficiently. Pursuant to § 12-17-24.1, Code of Alabama 1975, Chief Justice Sue Bell Cobb approved the plan designating the Marshall County Family Court. A Family Court Coordinator screens the appropriate cases for docketing.

Over the course of the past 3 years, the AOC staff has worked extensively with Juvenile and Family Court Judges, state agencies, and juvenile/family law professionals to revise the Alabama Code as it relates to juvenile and family court issues. The Bill to revise the Juvenile Code was introduced during the last legislative session but did not pass before the session ended.

The proposed Code revision will accomplish several objectives. Among these are:

- Reorganizes and reformats the existing Juvenile Code for easy reference (former Title 12 was disorganized and inconsistent as a result of years of *ad hoc* legislating on juvenile issues).
- Expressly defines and distinguishes the duties and responsibilities of juvenile intake officers and juvenile probation officers.
- Separates categories of juvenile, civil, and criminal cases in the jurisdiction of the juvenile court and provides for the procedures to be followed in each type of case.
- Revises Alabama's juvenile statutes to bring the provisions relating to the secure confinement of children in compliance with federal law to prevent the loss of federal dollars related to juvenile delinquency prevention.
- Brings provisions relating to children placed in foster care in compliance with federal law to prevent the loss of federal dollars to provide services for these children.
- Enables courts to keep non-dangerous children from entering the juvenile justice system by clarifying that the court should not accept a petition for filing unless the petition is in the best interests of the public and the children.

The Juvenile Code revision bill we be introduced again in the 2008 Legislative Session. Its passage is essential to juvenile justice reform in the state.

Juvenile Detention Alternatives Initiative (JDAI)

The Juvenile Detention Alternatives Initiative (JDAI) is an initiative of the Annie E. Casey Foundation and is designed to support the Casey Foundation's vision that all youth involved in the juvenile justice system have opportunities to develop into healthy, productive adults.

After more than a decade of innovation and replication, JDAI is one of the nation's most effective, influential, and widespread juvenile justice system reform initiatives. JDAI focuses on the juvenile detention component of the juvenile justice system because youth are often unnecessarily or inappropriately detained at great expense, with long-lasting negative consequences for both public safety and youth development.

JDAI began in Alabama with visits to four sites in the summer of 2007. The sites visited were Mobile, Montgomery, Tuscaloosa and Birmingham. After the initial site visits, all four sites were chosen to participate in the JDAI project. The Annie E. Casey Foundation then awarded the state, through the AOC, a grant of \$150,000 to begin the project. Through the leadership and perseverance of Chief Justice Sue Bell Cobb, the AOC was able to attain an equal amount from the Governor's office to match the Casey grant.

Juvenile Probation Services

This division manages the State Juvenile Probation Officer Program including the establishment of statewide guidelines, certification and training standards. There are 259 juvenile probation officers and 43 juvenile support personnel.

Access and Visitation Program

The AOC, through the Family Court Division, administers the federally-funded Access and Visitation Grant Program, the goal of which is to develop programs and services to improve noncustodial parents' access to and visitation with their children.

Basic Court Improvement Program

The Basic CIP grant is a federally-funded program that has been administered by the AOC since FY 1995. The goal of the grant is to streamline juvenile court procedures and processes so that children adjudicated dependent may be placed in safe, permanent homes as quickly as possible.

The Judicial Volunteer Program

By Order of the Supreme Court of Alabama dated January 19, 2000, effective March 1, 2000, Rule 42, Alabama Rules of Judicial Administration was adopted allowing the use of a Judicial Volunteer Program in those circuit or district courts choosing to do so. Carefully screened, interviewed, and trained citizen volunteers are utilized in appropriate programs to assist in the court process. There are currently 11 Judicial Volunteer Programs around the State. Most programs have a Judicial Volunteer Program Coordinator who oversees these Programs. In the summer of 2007, the Judicial Volunteer Program Coordinators had a two-day meeting to update their programs and review materials. The Juvenile Conference Committee (JCC) Guide was updated as a result of this meeting.

One aspect of the Judicial Volunteer Program is the JCC. JCCs are authorized pursuant to Rule 15.1, Alabama Rules of Juvenile Procedure. Through the use of JCCs, a large percentage of petitions filed in Juvenile Court can be diverted and disposed of expeditiously. The Juvenile Court can then devote more time to dealing with the serious and the repeat juvenile offenders. During FY 2007, approximately 232 volunteers were trained for use on JCC panels.

Another aspect of the Judicial Volunteer Program is district court mediation in which trained volunteers are used as mediators in specific cases in district court, mostly small claims cases. During the last year, 59 volunteers served as mediators.

Legal Division

The Legal Division provides the Chief Justice, the Administrative Director of Courts, the state's circuit and district judges, the circuit clerks and the AOC division directors with advice and assistance regarding legal issues that arise in the performance of their respective duties and in the operation and administration of the Unified Judicial System, generally.

Upon request, the staff attorneys provide legal research and legal opinions to judges and other court officials as well as providing updates on changes in statutory and case law, court rules, court manuals and approved UJS forms. The Legal Division assists other AOC divisions and the Judicial College in providing instruction, training and education to court officials and their staffs at periodic training sessions, educational seminars and the semi-annual conventions of state court judges and clerks.

Alabama Judicial System Study Commission

The annual meeting of the Alabama Judicial System Study Commission was held in December 2007. The Study Commission has 45 members that represent the Executive, Legislative and Judicial branches of government as well as the legal profession. The commission members elected to study four issues through selected sub-committees. The issues selected were:

- 1) Judicial Inquiry Commission (JIC) & Court of Judiciary – This issue arises due to the change in 2001 that eliminated the anonymity of complainants submitted to the JIC.
- 2) Oversight Committee for Circuit Clerks – Presently, no committee or commission exists in which a complaint against a Circuit Clerk can be submitted.
- 3) Mandatory Judicial Education – This would require all elected judicial system employees to attend a set number of continuing education hours
- 4) Indigent Defense – This is an ongoing issue regarding the quality of indigent defense as well as the cost assessed to the state for indigent defense services.

Public Information

Requests from individuals, public, or private associations, for computer-based information, maintained by the Administrative Office of Courts, can be requested by application. The Administrative Director of Courts approves of the request and forwards the approval to the Public Information Officer. Any person requesting access to UJS computer-based data shall complete a contract agreeing to pay actual costs incurred in producing such information.

Records sealed, exempted, or otherwise restricted by law or rule may not be released to the general public except by court order. Information “made to order,” rather than information readily available, is not subject to disclosure and will not be produced, unless it can be shown to possess significant potential for the enhancement of the judicial system. The responsibility for the approval, processing and dissemination of public information is coordinated through the Director of Public Information.

Research

The Administrative Office of Courts worked with the National Center for State Courts (NCSC), an independent non-profit research and consulting agency on court operations, to review case weights that were originally adopted by the Supreme Court in 1975. In 1987, the Supreme Court again adopted the same weighted caseload system as an additional tool to determine the need for additional judges throughout the state.

The NCSC conducted a time study in which all judicial officers and active referees were asked to participate, and record all of their case related and non case related activities each day. Urban, suburban, and rural jurisdictions were well represented in the time study, which provided NCSC with a strong dataset in order to measure current practice.

A Workload Assessment Advisory Committee (WAAC), representing AOC administration and district and circuit judges, was established to work with the NCSC to review the dataset and to determine a discrete set of case types for which to develop case weights and subsequently measure judicial workload. Upon approval by the Alabama Supreme Court, the weighted caseload formula will be utilized to assess the manpower needed for the judiciary on an annual basis.

**Judicial System Budget
General Fund Budgets
Three Year Summary FY 2006-2008**

	FY 2005- 2006 Expenditures	FY 2006- 2007 Expenditures	FY 2007- 2008 Budget	\$ Increase (Decrease)	% Increase (Decrease)
General Fund:					
Unified Judicial System	\$135,357,075	\$146,703,897	\$155,814,783	\$9,110,886	6.21%
Supreme Court	8,147,532	8,485,874	9,112,317	626,443	7.38%
Court of Criminal Appeals	3,869,470	4,093,381	4,389,186	295,805	7.23%
Court of Civil Appeals	3,435,119	3,552,088	3,738,735	186,647	5.25%
Supreme Court Law Library	1,368,262	1,527,904	1,490,176	(37,728)	-2.47%
Judicial Inquiry Commission	351,912	466,411	415,961	(50,450)	-10.82%
Total UJS General Fund	\$152,529,370	\$164,829,555	\$174,961,158	\$10,131,603	6.15%
Grants and Trust Funds:					
Capital Improvement Fund	\$4,006,060	\$3,975,000	\$0		
	1,500,000	1,115,200	75,000		
Advanced Tech. and Data Ex. Fd.	1,940,151	3,922,257	6,210,457	2,288,200	58.34%
Mandatory Treatment Program	3,393,063	3,421,675	4,465,947	1,044,272	30.52%
Juvenile Prob. Serv. Fd. - Tobacco	3,309,760	5,354,431	5,360,827	6,396	0.12%
Juvenile Prob. Serv. Fd. - County	2,117,075	0	436,658	436,658	
Court Automation	1,456,268	3,353,764	3,036,040	(317,724)	-9.47%
Federal Funds	7,179,596	7,375,149	5,914,210	(1,460,939)	-19.81%
Total Grants and Trust Funds	\$24,901,973	\$28,517,476	\$25,499,139	\$1,996,863	7.00%
Grand Total of All Funds	\$177,431,343	\$193,347,031	\$200,460,297	\$12,128,466	6.27%



Judicial Inquiry Commission

Judicial Inquiry Commission Members

Hon. Randall L. Cole
Chairman
Circuit Judge
Fort Payne

Mr. Norman E. Waldrop, Jr.
First Vice Chairman
Attorney at Law
Mobile

Hon. P. Ben McLauchlin, Jr.
Second Vice Chairman
Circuit Judge
Ozark

Hon. George E. Carpenter
District Judge
Tuscumbia

Hon. Craig Pittman
Judge, Court of Civil Appeals
Montgomery

Mr. Lee E. Portis
Lay Member
Prichard

Mr. David Scott
Lay Member
Opelika

Dr. David Thrasher
Lay Member
Montgomery

Mr. Fournier Gale, Esq.
Attorney at Law
Birmingham

The Judicial Inquiry Commission has nine members. The Supreme Court appoints one appellate judge. The Circuit Judges' Association appoints two circuit judges. The Lieutenant Governor appoints one district judge who is subject to Senate confirmation. Two attorneys are appointed by the Board of Bar Commissioners. Three non-lawyer citizens are appointed by the Governor, subject to Senate confirmation. Commission members are appointed for terms of four years.



The Judicial Inquiry Commission considers and investigates complaints of misconduct made against judges of the State Judicial System. It has authority to receive and initiate its own complaints, conduct investigations, and file and prosecute complaints in the Court of the Judiciary. These complaints charge violations of the Alabama Canons of Judicial Ethics, misconduct in office, or failure to perform judicial duties. The Commission also renders advisory opinions to judges if needed.

Court of the Judiciary

The Court of the Judiciary is a nine-member body that hears complaints filed by the Judicial Inquiry Commission. The Court is composed of one judge from an appellate court, other than the Supreme Court of Alabama, who shall be selected by the Supreme Court of Alabama and shall serve as Chief Judge of the Court of the Judiciary. The Court also includes two judges from the circuit courts, who shall be selected by the Circuit Judges' Association; one district judge who shall be selected by the District Judges' Association; two members of the State Bar who shall be selected by the governing body of the Alabama State Bar; two persons who are not lawyers who shall be appointed by the Governor; and one person appointed by the Lieutenant Governor. Members appointed by the Governor and Lieutenant Governor shall be subject to Senate confirmation before serving.

The Court has the authority to enter the following sanctions for a violation of a Canon of Judicial Ethics: removal from office, suspension with or without pay, censure, retirement of a judge or such other sanctions as may be prescribed by law.

Decisions of the Court of the Judiciary may be appealed to the Supreme Court of Alabama, which reviews the record of proceedings on the law and the facts. The Supreme Court of Alabama adopts rules governing the procedures of the Court of the Judiciary.

Counsel for the prosecution of cases before the Court of the Judiciary is provided by the State Attorney General's Office. The Clerk of the Court of Civil Appeals serves as secretary of the Court of the Judiciary.

There was one complaint filed with the Court of the Judiciary by the Judicial Inquiry Commission during FY 2007.

Court of the Judiciary Members

Hon. Greg Shaw, Chief Judge
Court of Criminal Appeals

Hon. David A. Rains
Circuit Judge, 9th Circuit

Hon. J. Scott Vowell
Presiding Circuit Judge, 10th Circuit

Hon. John V. Denson
Circuit Judge, 37th Circuit

Hon. John J. Dobson
District Judge, Blount County

Mr. William D. Melton Esq.
Attorney at Law
Evergreen

Mr. James L. North Esq.
Attorney at Law
Birmingham

(2) Vacancies
Lay Members

Circuit, District, Municipal & Probate Courts

The Alabama Constitution, in addition to providing for the appellate courts of the State, provides for a trial court of general jurisdiction known as the Circuit Court; a trial court of limited jurisdiction known as the District Court; a Probate Court and such Municipal Courts as may be provided by law.

The State of Alabama is divided into 41 judicial circuits, numbered and composed of counties. Jury trials within the State of Alabama occur at the circuit court level.

There is an office of the circuit clerk in each of the 67 counties and one in the Bessemer Division of Jefferson County. The duties of the circuit clerks include the issuance of process and the maintenance of all court records. The circuit clerk is responsible for the same duties as they apply to the district court when there is no clerk appointed to that office. There is currently only one district clerk in the State of Alabama.

Sessions of the district court are required to be held in each county seat. Although the district court is considered to be a "court of record," transcripts or reports of the proceedings of this Court are not required by law. All cases are tried without a jury.

Any given municipality of the State of Alabama, if it elects to do so, holds its own court proceedings according to the limitations provided by law. If the municipal court is abolished by that governing body, jurisdiction is transferred to the appropriate district court.

The probate courts in each county of the State have original and general jurisdictions over very specific matters delineated by statute. While constitutionally a part of the Alabama Judicial System, the probate courts are not included in the system's budget and are administered locally by the respective probate judge. Funding is generated through the county governments or through fees generated in probate court.

ALABAMA JUDICIAL CIRCUITS

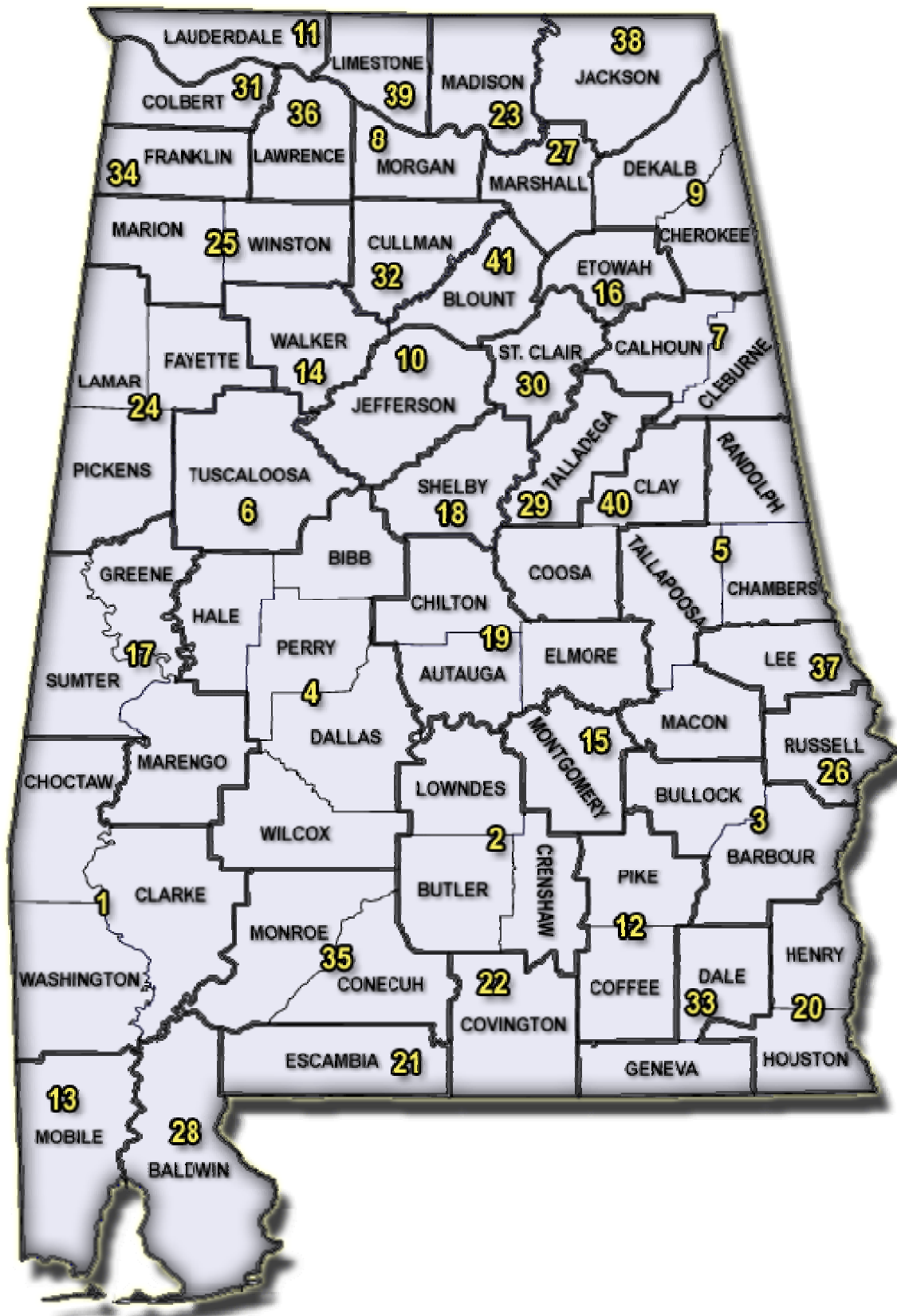


Table 1: Circuit Court Caseload Statistics, Fiscal Years 2006 and 2007

Table 1: Circuit Court Caseload Statistics, Fiscal Years 2006 and 2007										
Circuit	County	Jurisdiction	Case Filings		Change 2006-2007		Case Dispositions		Change 2006-2007	
			2006	2007	# +/-	%	2006	2007	# +/-	%
1ST	Choctaw	Criminal	117	142	25	21%	192	135	-57	-30%
		Civil	143	158	15	10%	158	161	3	2%
		Domestic	140	137	-3	-2%	114	118	4	4%
		Total	400	437	37	9%	464	414	-50	-11%
	Clarke	Criminal	525	723	198	38%	521	508	-13	-2%
		Civil	241	309	68	28%	214	279	65	30%
		Domestic	244	247	3	1%	249	235	-14	-6%
		Total	1010	1279	269	27%	984	1022	38	4%
	Washington	Criminal	280	305	25	9%	362	259	-103	-28%
		Civil	111	168	57	51%	142	128	-14	-10%
		Domestic	237	214	-23	-10%	209	197	-12	-6%
		Total	628	687	59	9%	713	584	-129	-18%
	1st Circuit Totals	Criminal	922	1170	248	27%	1075	902	-173	-16%
		Civil	495	635	140	28%	514	568	54	11%
		Domestic	621	598	-23	-4%	572	550	-22	-4%
		Total	2038	2403	365	18%	2161	2020	-141	-7%
2ND	Butler	Criminal	321	318	-3	-1%	436	336	-100	-23%
		Civil	175	196	21	12%	161	197	36	22%
		Domestic	155	181	26	17%	178	201	23	13%
		Total	651	695	44	7%	775	734	-41	-5%
	Crenshaw	Criminal	225	181	-44	-20%	335	231	-104	-31%
		Civil	118	118	0	0%	103	132	29	28%
		Domestic	177	188	11	6%	153	178	25	16%
		Juvenile	1	0	-1	0%	1	0	-1	0%
		Total	521	487	-34	-7%	592	541	-51	-9%
	Lowndes	Criminal	186	154	-32	-17%	210	292	82	39%
		Civil	134	103	-31	-23%	139	122	-17	-12%
		Domestic	73	89	16	22%	70	93	23	33%
		Juvenile	0	2	2	0%	1	0	-1	0%
		Total	393	348	-45	-11%	420	507	87	21%
	2nd Circuit Totals	Criminal	732	653	-79	-11%	981	859	-122	-12%
		Civil	427	417	-10	-2%	403	451	48	12%
		Domestic	405	458	53	13%	401	472	71	18%
		Juvenile	1	2	1	0%	2	0	-2	0%
		Total	1565	1530	-35	-2%	1787	1782	-5	0%
3RD	Barbour - Clayton	Criminal	120	102	-18	-15%	141	107	-34	-24%
		Civil	78	75	-3	-4%	76	80	4	5%
		Domestic	78	76	-2	-3%	93	130	37	40%
		Total	276	253	-23	-8%	310	317	7	2%
	Barbour - Eufaula	Criminal	437	253	-184	-42%	430	283	-147	-34%
		Civil	177	155	-22	-12%	223	188	-35	-16%
		Domestic	214	179	-35	-16%	210	213	3	1%
		Total	828	587	-241	-29%	863	684	-179	-21%
	Barbour Totals	Criminal	557	355	-202	-36%	571	390	-181	-32%
		Civil	255	230	-25	-10%	299	268	-31	-10%
		Domestic	292	255	-37	-13%	303	343	40	13%
		Total	1104	840	-264	-24%	1173	1001	-172	-15%
	Bullock	Criminal	189	184	-5	-3%	169	187	18	11%
Civil		145	132	-13	-9%	185	125	-60	-32%	
Domestic		33	22	-11	-33%	42	15	-27	-64%	

Table 1: Circuit Court Caseload Statistics, Fiscal Years 2006 and 2007

Circuit	County	Jurisdiction	Filed in 06	Filed in 07	Change 06-07	Disp. in 06	Disp. in 07	Change 06-07
3rd Circuit	Totals	Total	367	338	-29 -8%	396	327	-69 -17%
		Criminal	746	539	-207 -28%	740	577	-163 -22%
		Civil	400	362	-38 -10%	484	393	-91 -19%
		Domestic	325	277	-48 -15%	345	358	13 4%
		Total	1471	1178	-293 -20%	1569	1328	-241 -15%
4TH	Bibb	Criminal	292	272	-20 -7%	299	243	-56 -19%
		Civil	230	170	-60 -26%	153	204	51 33%
		Domestic	236	257	21 9%	220	233	13 6%
		Total	758	699	-59 -8%	672	680	8 1%
	Dallas	Criminal	711	778	67 9%	593	826	233 39%
		Civil	401	436	35 9%	379	425	46 12%
		Domestic	327	333	6 2%	280	298	18 6%
		Total	1439	1547	108 8%	1252	1549	297 24%
	Hale	Criminal	110	129	19 17%	76	74	-2 -3%
		Civil	183	147	-36 -20%	147	159	12 8%
		Domestic	66	83	17 26%	62	67	5 8%
		Total	359	359	0 0%	285	300	15 5%
	Perry	Criminal	122	103	-19 -16%	129	103	-26 -20%
		Civil	103	121	18 17%	99	126	27 27%
		Domestic	55	49	-6 -11%	52	57	5 10%
		Total	280	273	-7 -3%	280	286	6 2%
	Wilcox	Criminal	85	101	16 19%	95	90	-5 -5%
		Civil	174	151	-23 -13%	182	165	-17 -9%
		Domestic	68	67	-1 -1%	68	55	-13 -19%
		Total	327	319	-8 -2%	345	310	-35 -10%
	4th Circuit Totals	Criminal	1320	1383	63 5%	1192	1336	144 12%
		Civil	1091	1025	-66 -6%	960	1079	119 12%
		Domestic	752	789	37 5%	682	710	28 4%
		Total	3163	3197	34 1%	2834	3125	291 10%
5TH	Chambers	Criminal	572	569	-3 -1%	499	616	117 23%
		Civil	282	366	84 30%	528	299	-229 -43%
		Domestic	316	359	43 14%	486	353	-133 -27%
		Juvenile	0	1	1 0%	0	0	0 0%
		Total	1170	1295	125 11%	1513	1268	-245 -16%
	Macon	Criminal	153	168	15 10%	99	157	58 59%
		Civil	250	251	1 0%	203	205	2 1%
		Domestic	120	140	20 17%	65	204	139 214%
		Total	523	559	36 7%	367	566	199 54%
	Randolph	Criminal	289	261	-28 -10%	283	276	-7 -2%
		Civil	197	186	-11 -6%	179	177	-2 -1%
		Domestic	217	226	9 4%	196	211	15 8%
		Total	703	673	-30 -4%	658	664	6 1%
	Tallapoosa - Alex City	Criminal	448	373	-75 -17%	516	387	-129 -25%
		Civil	268	273	5 2%	265	247	-18 -7%
		Domestic	275	234	-41 -15%	233	235	2 1%
		Total	991	881	-110 -11%	1014	870	-144 -14%
	Tallapoosa - Dadeville	Criminal	274	318	44 16%	208	294	86 41%
		Civil	147	146	-1 -1%	154	153	-1 -1%
		Domestic	207	235	28 14%	204	204	0 0%
		Total	628	699	71 11%	566	643	77 14%
	Tallapoosa Totals	Criminal	722	691	-31 -4%	724	681	-43 -6%
		Civil	415	419	4 1%	419	400	-19 -5%
		Domestic	482	469	-13 -3%	437	431	-6 -1%
		Juvenile	0	1	1 0%	0	1	1 0%
		Total	1619	1580	-39 -2%	1580	1513	-67 -4%

Table 1: Circuit Court Caseload Statistics, Fiscal Years 2006 and 2007

Circuit	County	Jurisdiction	Filed in 06	Filed in 07	Change 06-07	Disp. in 06	Disp. in 07	Change 06-07
5th Circuit	Totals	Criminal	1736	1689	-47 -3%	1605	1730	125 8%
		Civil	1144	1222	78 7%	1329	1081	-248 -19%
		Domestic	1135	1194	59 5%	1184	1199	15 1%
		Juvenile	0	2	2 0%	0	1	1 0%
		Total	4015	4107	92 2%	4118	4011	-107 -3%
6TH	Tuscaloosa	Criminal	4728	4327	-401 -8%	3310	3918	608 18%
		Civil	1752	1913	161 9%	1766	1795	29 2%
		Domestic	1783	1802	19 1%	1791	1669	-122 -7%
		Juvenile	2617	2520	-97 -4%	2384	2187	-197 -8%
		Child Support	1195	1243	48 4%	1244	1179	-65 -5%
		Total	12075	11805	-270 -2%	10495	10748	253 2%
7TH	Calhoun	Criminal	2869	2604	-265 -9%	2512	2712	200 8%
		Civil	1010	924	-86 -9%	1048	958	-90 -9%
		Domestic	1702	1671	-31 -2%	1727	1665	-62 -4%
		Juvenile	1304	1350	46 4%	1364	1360	-4 0%
		Child Support	1071	1160	89 8%	947	1157	210 22%
		Total	7956	7709	-247 -3%	7598	7852	254 3%
	Cleburne	Criminal	499	427	-72 -14%	619	504	-115 -19%
		Civil	77	81	4 5%	74	66	-8 -11%
		Domestic	293	268	-25 -9%	320	260	-60 -19%
		Juvenile	155	Reported in District Court		149	Reported in District Court	
		Child Support	71			77		
		Total	1095	776	-319 -29%	1239	830	-409 -33%
	7th Circuit Totals	Criminal	3368	3031	-337 -10%	3131	3216	85 3%
		Civil	1087	1005	-82 -8%	1122	1024	-98 -9%
		Domestic	1995	1939	-56 -3%	2047	1925	-122 -6%
		Juvenile	1459	1350	-109 -7%	1513	1360	-153 -10%
		Child Support	1142	1160	18 2%	1024	1157	133 13%
		Total	9051	8485	-566 -6%	8837	8682	-155 -2%
8TH	Morgan	Criminal	1919	1901	-18 -1%	1961	1927	-34 -2%
		Civil	929	887	-42 -5%	912	891	-21 -2%
		Domestic	1468	1413	-55 -4%	1390	1396	6 0%
		Juvenile	2	0	-2 0%	1	0	-1 0%
		Total	4318	4201	-117 -3%	4264	4215	-49 -1%
9TH	Cherokee	Criminal	860	741	-119 -14%	881	767	-114 -13%
		Civil	171	222	51 30%	133	177	44 33%
		Domestic	272	291	19 7%	277	258	-19 -7%
		Total	1303	1254	-49 -4%	1291	1202	-89 -7%
	DeKalb	Criminal	758	618	-140 -18%	826	918	92 11%
		Civil	418	465	47 11%	411	381	-30 -7%
		Domestic	954	882	-72 -8%	861	958	97 11%
		Total	2130	1965	-165 -8%	2098	2257	159 8%
	9th Circuit Totals	Criminal	1618	1359	-259 -16%	1707	1685	-22 -1%
		Civil	589	687	98 17%	544	558	14 3%
		Domestic	1226	1173	-53 -4%	1138	1216	78 7%
		Total	3433	3219	-214 -6%	3389	3459	70 2%
10TH	Jefferson - Bessemer	Criminal	1943	1759	-184 -9%	1915	1807	-108 -6%
		Civil	1660	1689	29 2%	1515	1892	377 25%
		Domestic	1086	1071	-15 -1%	1102	1050	-52 -5%
		Juvenile	Jefferson-Bessemer Juvenile and Child Support Cases are included in Jefferson-Birmingham Numbers					
		Child Support						
		Total	4689	4519	-170 -3.6%	4532	4749	217 5%
	Jefferson - Birmingham	Criminal	7846	7103	-743 -9.5%	8312	7502	-810 -10%
		Civil	7961	7208	-753 -9.5%	7683	7163	-520 -7%

Table 1: Circuit Court Caseload Statistics, Fiscal Years 2006 and 2007

Circuit	County	Jurisdiction	Filed in 06	Filed in 07	Change 06-07		Disp. in 06	Disp. in 07	Change 06-07	
11TH	10th Circuit Totals	Domestic	4056	3980	-76	-1.9%	3970	3751	-219	-6%
		Juvenile	5414	5021	-393	-7.3%	5073	4378	-695	-14%
		Child Support	5711	4865	-846	-15%	4171	4369	198	5%
		Total	30930	28177	-2,753	-8.9%	29390	27163	-2,227	-8%
		Criminal	9789	8862	-927	-9.5%	10227	9309	-918	-9%
		Civil	9621	8897	-724	-7.5%	9198	9055	-143	-2%
		Domestic	5142	5051	-91	-1.8%	5072	4801	-271	-5%
		Juvenile	5414	5021	-393	-7.3%	5073	4378	-695	-14%
	Lauderdale	Child Support	5711	4865	-846	-15%	4171	4369	198	5%
		Total	35677	32696	-2,981	-8.4%	33741	31912	-1,829	-5%
		Criminal	898	1027	129	14.4%	779	1069	290	37%
		Civil	544	629	85	15.6%	608	646	38	6%
		Domestic	1183	1236	53	4.5%	1121	1200	79	7%
		Juvenile	1150	969	-181	-15.7%	1043	949	-94	-9%
		Child Support	652	603	-49	-7.5%	588	603	15	3%
		Total	4427	4464	37	0.8%	4139	4467	328	8%
12TH	Coffee - Elba	Criminal	145	240	95	65.5%	282	169	-113	-40%
		Civil	117	125	8	6.8%	124	187	63	51%
		Domestic	118	123	5	4.2%	123	161	38	31%
		Total	380	488	108	28.4%	529	517	-12	-2%
	Coffee - Enterprise	Criminal	863	1162	299	34.6%	751	1187	436	58%
		Civil	310	277	-33	-10.6%	356	465	109	31%
		Domestic	395	375	-20	-5.1%	364	408	44	12%
		Total	1568	1814	246	15.7%	1471	2060	589	40%
	Coffee Totals	Criminal	1008	1402	394	39.1%	1033	1356	323	31%
		Civil	427	402	-25	-5.9%	480	652	172	36%
		Domestic	513	498	-15	-2.9%	487	569	82	17%
		Total	1948	2302	354	18.2%	2000	2577	577	29%
	Pike	Criminal	860	774	-86	-10.0%	790	860	70	9%
		Civil	340	353	13	3.8%	365	378	13	4%
		Domestic	245	215	-30	-12.2%	257	244	-13	-5%
		Total	1445	1342	-103	-7.1%	1412	1482	70	5%
	12th Circuit Totals	Criminal	1868	2176	308	16.5%	1823	2216	393	22%
		Civil	767	755	-12	-1.6%	845	1030	185	22%
		Domestic	758	713	-45	-5.9%	744	813	69	9%
		Total	3393	3644	251	7.4%	3412	4059	647	19%
13TH	Mobile	Criminal	8556	8170	-386	-4.5%	8600	7840	-760	-9%
		Civil	4520	4292	-228	-5.0%	4500	4089	-411	-9%
		Domestic	4094	3838	-256	-6.3%	4189	3570	-619	-15%
		Juvenile	5711	5776	65	1.1%	5889	5891	2	0%
		Child Support	4177	4359	182	4.4%	5808	4576	-1,232	-21%
		Total	27058	26435	-623	-2.3%	28986	25966	-3,020	-10%
14TH	Walker	Criminal	706	647	-59	-8.4%	682	479	-203	-30%
		Civil	721	797	76	10.5%	778	738	-40	-5%
		Domestic	976	841	-135	-13.8%	865	938	73	8%
		Juvenile	1297	1239	-58	-4.5%	1272	1076	-196	-15%
		Total	3700	3524	-176	-4.8%	3597	3231	-366	-10%
15TH	Montgomery	Criminal	2366	2464	98	4.1%	2654	2546	-108	-4%
		Civil	3422	3038	-384	-11.2%	3559	3497	-62	-2%
		Domestic	1937	1939	2	0.1%	2021	2055	34	2%
		Juvenile	2795	2363	-432	-15.5%	2827	2449	-378	-13%
		Child Support	1751	2022	271	15.5%	1612	2145	533	33%
		Total	12271	11826	-445	-3.6%	12673	12692	19	0%

Table 1: Circuit Court Caseload Statistics, Fiscal Years 2006 and 2007

Circuit	County	Jurisdiction	Filed in 06	Filed in 07	Change 06-07		Disp. in 06	Disp. in 07	Change 06-07	
16TH	Etowah	Criminal	1835	2271	436	23.8%	1589	2351	762	48%
		Civil	1595	1270	-325	-20.4%	1706	1407	-299	-18%
		Domestic	1583	1616	33	2.1%	1596	1634	38	2%
		Total	5013	5157	144	2.9%	4891	5392	501	10%
17TH	Greene	Criminal	67	67	0	0.0%	53	93	40	75%
		Civil	94	96	2	2.1%	73	80	7	10%
		Domestic	51	45	-6	-11.8%	59	34	-25	-42%
		Juvenile	0	1	1	0.0%	0	1	1	0%
		Total	212	209	-3	-1.4%	185	208	23	12%
	Marengo	Criminal	219	239	20	9.1%	357	207	-150	-42%
		Civil	192	223	31	16.1%	205	196	-9	-4%
		Domestic	241	193	-48	-19.9%	211	186	-25	-12%
		Total	652	655	3	0.5%	773	589	-184	-24%
	Sumter	Criminal	39	106	67	171.8%	123	96	-27	-22%
		Civil	121	136	15	12.4%	101	139	38	38%
		Domestic	90	82	-8	-8.9%	70	92	22	31%
		Total	250	324	74	29.6%	294	327	33	11%
	17th Circuit Totals	Criminal	325	412	87	26.8%	533	396	-137	-26%
		Civil	407	455	48	11.8%	379	415	36	9%
		Domestic	382	320	-62	-16.2%	340	312	-28	-8%
		Juvenile	0	1	1	0.0%	0	1	1	0%
		Total	1114	1188	74	6.6%	1252	1124	-128	-10%
18TH	Shelby	Criminal	1724	1830	106	6.1%	1643	2292	649	40%
		Civil	1710	1722	12	0.7%	1667	1731	64	4%
		Domestic	1315	1267	-48	-3.7%	1239	1231	-8	-1%
		Juvenile	1	0	-1	0%	0	0	0	0%
		Total	4750	4819	69	1.5%	4549	5254	705	15%
19TH	Autauga	Criminal	433	456	23	5.3%	367	478	111	30%
		Civil	372	423	51	13.7%	398	399	1	0%
		Domestic	513	494	-19	-3.7%	476	473	-3	-1%
		Juvenile	0	1	1	0.0%	0	1	1	0%
		Total	1318	1374	56	4.2%	1241	1351	110	9%
	Chilton	Criminal	598	503	-95	-15.9%	643	607	-36	-6%
		Civil	360	392	32	8.9%	419	356	-63	-15%
		Domestic	591	528	-63	-10.7%	527	503	-24	-5%
		Total	1549	1423	-126	-8.1%	1589	1466	-123	-8%
	Elmore	Criminal	908	790	-118	-13.0%	1001	790	-211	-21%
		Civil	707	650	-57	-8.1%	715	669	-46	-6%
		Domestic	792	750	-42	-5.3%	793	749	-44	-6%
		Juvenile	16	24	8	50.0%	15	26	11	73%
		Total	2423	2214	-209	-8.6%	2524	2234	-290	-11%
	19th Circuit Totals	Criminal	1939	1749	-190	-9.8%	2011	1875	-136	-7%
		Civil	1439	1465	26	1.8%	1532	1424	-108	-7%
		Domestic	1896	1772	-124	-6.5%	1796	1725	-71	-4%
		Juvenile	16	25	9	56.3%	15	27	12	80%
		Total	5290	5011	-279	-5.3%	5354	5051	-303	-6%
20TH	Henry	Criminal	631	404	-227	-36.0%	727	395	-332	-46%
		Civil	140	168	28	20.0%	133	145	12	9%
		Domestic	137	141	4	2.9%	130	115	-15	-12%
		Juvenile	0	1	1	0.0%	0	1	1	0%
		Total	908	714	-194	-21.4%	990	656	-334	-34%
	Houston	Criminal	2617	3904	1,287	49.2%	3091	4077	986	32%
		Civil	1024	999	-25	-2.4%	1081	932	-149	-14%
		Domestic	1664	1566	-98	-5.9%	1612	1564	-48	-3%

Table 1: Circuit Court Caseload Statistics, Fiscal Years 2006 and 2007

Circuit	County	Jurisdiction	Filed in 06	Filed in 07	Change 06-07		Disp. in 06	Disp. in 07	Change 06-07	
20th Circuit Totals		Juvenile	1453	1612	159	10.9%	1315	1442	127	10%
		Child Support	903	776	-127	-14.1%	965	902	-63	-7%
		Total	7661	8857	1,196	15.6%	8064	8917	853	11%
		Criminal	3248	4308	1,060	32.6%	3818	4472	654	17%
		Civil	1164	1167	3	0.3%	1214	1077	-137	-11%
		Domestic	1801	1707	-94	-5.2%	1742	1679	-63	-4%
		Juvenile	1453	1613	160	11.0%	1315	1443	128	10%
		Child Support	903	776	-127	-14.1%	965	902	-63	-7%
		Total	8569	9571	1,002	11.7%	9054	9573	519	6%
21ST	Escambia	Criminal	725	614	-111	-15.3%	634	642	8	1%
		Civil	359	280	-79	-22.0%	317	257	-60	-19%
		Domestic	399	355	-44	-11.0%	359	361	2	1%
		Total	1483	1249	-234	-15.8%	1310	1260	-50	-4%
22ND	Covington	Criminal	712	926	214	30.1%	671	745	74	11%
		Civil	265	284	19	7.2%	285	273	-12	-4%
		Domestic	638	637	-1	-0.2%	612	647	35	6%
		Juvenile	1	0	-1	0%	1	0	-1	0%
		Total	1616	1847	231	14.3%	1569	1665	96	6%
23RD	Madison	Criminal	8235	9574	1,339	16.3%	8091	8870	779	10%
		Civil	2551	2779	228	8.9%	2581	2617	36	1%
		Domestic	2994	2825	-169	-5.6%	2883	2795	-88	-3%
		Juvenile	0	1	1	0.0%	0	1	1	0%
		Total	13780	15179	1,399	10.2%	13555	14283	728	5%
24TH	Fayette	Criminal	232	315	83	35.8%	296	208	-88	-30%
		Civil	120	124	4	3.3%	116	123	7	6%
		Domestic	260	253	-7	-2.7%	262	233	-29	-11%
		Total	612	692	80	13.1%	674	564	-110	-16%
	Lamar	Criminal	222	330	108	48.6%	348	270	-78	-22%
		Civil	89	115	26	29.2%	124	110	-14	-11%
		Domestic	193	191	-2	-1.0%	199	178	-21	-11%
	Pickens	Total	504	636	132	26.2%	671	558	-113	-17%
		Criminal	281	175	-106	-37.7%	420	366	-54	-13%
		Civil	118	149	31	26.3%	144	144	0	0%
		Domestic	183	176	-7	-3.8%	180	182	2	1%
		Juvenile	0	1	1	0.0%	0	1	1	0%
		Total	582	501	-81	-13.9%	744	693	-51	-7%
	24th Circuit Totals	Criminal	735	820	85	11.6%	1064	844	-220	-21%
		Civil	327	388	61	18.7%	384	377	-7	-2%
		Domestic	636	620	-16	-2.5%	641	593	-48	-7%
		Juvenile	0	1	1	0.0%	0	1	1	0%
		Total	1698	1829	131	7.7%	2089	1815	-274	-13%
25TH	Marion	Criminal	435	490	55	12.6%	442	468	26	6%
		Civil	246	274	28	11.4%	259	265	6	2%
		Domestic	488	456	-32	-6.6%	416	345	-71	-17%
		Total	1169	1220	51	4.4%	1117	1078	-39	-3%
	Winston	Criminal	228	229	1	0.4%	238	202	-36	-15%
		Civil	169	175	6	3.6%	140	163	23	16%
		Domestic	328	278	-50	-15.2%	365	345	-20	-5%
		Total	725	682	-43	-5.9%	743	710	-33	-4%
	25th Circuit Totals	Criminal	663	719	56	8.4%	680	670	-10	-1%
		Civil	415	449	34	8.2%	399	428	29	7%
		Domestic	816	734	-82	-10.0%	781	690	-91	-12%
		Total	1894	1902	8	0.4%	1860	1788	-72	-4%

Table 1: Circuit Court Caseload Statistics, Fiscal Years 2006 and 2007

Circuit	County	Jurisdiction	Filed in 06	Filed in 07	Change 06-07		Disp. in 06	Disp. in 07	Change 06-07	
26TH	Russell	Criminal	1692	1555	-137	-8.1%	1598	1421	-177	-11%
		Civil	501	429	-72	-14.4%	479	450	-29	-6%
		Domestic	639	628	-11	-1.7%	559	615	56	10%
		Total	2832	2612	-220	-7.8%	2636	2486	-150	-6%
27TH	Marshall - Albertville	Criminal	970	661	-309	-31.9%	824	602	-222	-27%
		Civil	309	288	-21	-6.8%	319	283	-36	-11%
		Domestic	764	733	-31	-4.1%	743	728	-15	-2%
		Juvenile	0	1	1	0.0%	0	0	0	0%
		Total	2043	1683	-360	-17.6%	1886	1613	-273	-14%
	Marshall - Guntersville	Criminal	364	496	132	36.3%	408	358	-50	-12%
		Civil	432	408	-24	-5.6%	525	422	-103	-20%
		Domestic	693	774	81	11.7%	726	695	-31	-4%
		Total	1489	1678	189	12.7%	1659	1475	-184	-11%
	27th Circuit Totals	Criminal	1334	1157	-177	-13.3%	1232	960	-272	-22%
		Civil	741	696	-45	-6.1%	844	705	-139	-16%
		Domestic	1457	1507	50	3.4%	1469	1423	-46	-3%
		Juvenile	0	1	1	0.0%	0	0	0	0%
		Total	3532	3361	-171	-4.8%	3545	3088	-457	-13%
28TH	Baldwin	Criminal	4250	3660	-590	-13.9%	3984	3916	-68	-2%
		Civil	1541	1860	319	20.7%	1269	1847	578	46%
		Domestic	2012	2039	27	1.3%	1973	2066	93	5%
		Juvenile	Reported in District	2623	2,623		Reported in District	2345	2,345	
		Child Support		783	783			836	836	
		Total	7807	10965	3,158	40.5%	7227	11010	3,783	52%
29TH	Talladega	Criminal	1496	1397	-99	-6.6%	1268	1573	305	24%
		Civil	751	698	-53	-7.1%	780	776	-4	-1%
		Domestic	1266	1210	-56	-4.4%	1292	1182	-110	-9%
		Total	3513	3305	-208	-5.9%	3340	3531	191	6%
30TH	St. Clair - Ashville	Criminal	486	431	-55	-11.3%	466	377	-89	-19%
		Civil	280	376	96	34.3%	238	355	117	49%
		Domestic	327	298	-29	-8.9%	269	310	41	15%
		Total	1093	1105	12	1.1%	973	1043	70	7%
	St. Clair - Pell City	Criminal	681	721	40	5.9%	670	666	-4	-1%
		Civil	468	497	29	6.2%	432	432	0	0%
		Domestic	452	496	44	9.7%	442	442	0	0%
		Total	1601	1714	113	7.1%	1544	1540	-4	0%
	30th Circuit Totals	Criminal	1167	1152	-15	-1.3%	1136	1043	-93	-8%
		Civil	748	873	125	16.7%	670	787	117	17%
		Domestic	779	794	15	1.9%	711	752	41	6%
		Total	2694	2819	125	4.6%	2517	2583	66	3%
31ST	Colbert	Criminal	715	655	-60	-8.4%	611	677	66	11%
		Civil	570	501	-69	-12.1%	572	481	-91	-16%
		Domestic	839	928	89	10.6%	852	924	72	8%
		Total	2124	2084	-40	-1.9%	2035	2082	47	2%
32ND	Cullman	Criminal	629	551	-78	-12.4%	525	505	-20	-4%
		Civil	635	618	-17	-2.7%	704	615	-89	-13%
		Domestic	1289	1352	63	4.9%	1298	1336	38	3%
		Total	2553	2521	-32	-1.3%	2527	2456	-71	-3%
33RD	Dale	Criminal	833	794	-39	-4.7%	841	896	55	7%
		Civil	314	333	19	6.1%	354	334	-20	-6%
		Domestic	867	943	76	8.8%	874	938	64	7%
		Total	2014	2070	56	2.8%	2069	2169	100	5%
	Geneva	Criminal	627	451	-176	-28.1%	685	541	-144	-21%
		Civil	168	208	40	23.8%	166	198	32	19%

Table 1: Circuit Court Caseload Statistics, Fiscal Years 2006 and 2007

Circuit	County	Jurisdiction	Filed in 06	Filed in 07	Change 06-07		Disp. in 06	Disp. in 07	Change 06-07	
33rd Circuit Totals		Domestic	419	415	-4	-1.0%	514	526	12	2%
		Total	1214	1074	-140	-11.5%	1365	1265	-100	-7%
		Criminal	1460	1245	-215	-14.7%	1526	1437	-89	-6%
		Civil	482	541	59	12.2%	520	532	12	2%
		Domestic	1286	1358	72	5.6%	1388	1464	76	5%
		Total	3228	3144	-84	-2.6%	3434	3434	0	0%
34TH Franklin	Criminal	551	487	-64	-11.6%	535	473	-62	-12%	
	Civil	320	296	-24	-7.5%	357	274	-83	-23%	
	Domestic	417	400	-17	-4.1%	389	383	-6	-2%	
	Total	1288	1183	-105	-8.2%	1281	1130	-151	-12%	
35TH Conecuh	Criminal	170	213	43	25.3%	183	166	-17	-9%	
	Civil	120	183	63	52.5%	109	125	16	15%	
	Domestic	132	132	0	0.0%	127	97	-30	-24%	
	Total	422	528	106	25.1%	419	388	-31	-7%	
	Monroe	Criminal	263	200	-63	-24.0%	136	235	99	73%
		Civil	199	230	31	15.6%	185	200	15	8%
		Domestic	294	277	-17	-5.8%	236	286	50	21%
		Total	756	707	-49	-6.5%	557	721	164	29%
	35th Circuit Totals	Criminal	433	413	-20	-4.6%	319	401	82	26%
		Civil	319	413	94	29.5%	294	325	31	11%
		Domestic	426	409	-17	-4.0%	363	383	20	6%
		Total	1178	1235	57	4.8%	976	1109	133	14%
36TH Lawrence	Criminal	862	822	-40	-4.6%	718	935	217	30%	
	Civil	244	243	-1	-0.4%	215	236	21	10%	
	Domestic	421	420	-1	-0.2%	405	412	7	2%	
	Total	1527	1485	-42	-2.8%	1338	1583	245	18%	
37TH Lee	Criminal	1771	1619	-152	-8.6%	1761	1609	-152	-9%	
	Civil	896	917	21	2.3%	889	891	2	0%	
	Domestic	837	864	27	3.2%	828	781	-47	-6%	
	Juvenile	1488	1561	73	4.9%	1386	1518	132	10%	
	Child Support	826	1071	245	29.7%	1086	1076	-10	-1%	
	Total	5818	6032	214	3.7%	5950	5875	-75	-1%	
38TH Jackson	Criminal	1202	899	-303	-25.2%	1090	928	-162	-15%	
	Civil	358	402	44	12.3%	375	344	-31	-8%	
	Domestic	823	841	18	2.2%	858	818	-40	-5%	
	Juvenile	0	3	3	0.0%	0	4	4	0%	
	Total	2383	2145	-238	-10.0%	2323	2094	-229	-10%	
39TH Limestone	Criminal	1106	945	-161	-14.6%	762	1008	246	32%	
	Civil	611	591	-20	-3.3%	521	665	144	28%	
	Domestic	792	825	33	4.2%	815	819	4	0%	
	Child Support	335	Reported in District Court		318	Reported in District Court				
	Total	2845	2361	-484	-17%	2416	2492	76	3%	
40TH Clay	Criminal	245	368	123	50%	258	296	38	15%	
	Civil	115	71	-44	-38%	87	147	60	69%	
	Domestic	150	145	-5	-3%	129	139	10	8%	
	Total	510	584	74	15%	474	582	108	23%	
	Coosa	Criminal	326	262	-64	-20%	286	218	-68	-24%
		Civil	80	86	6	8%	69	76	7	10%
		Domestic	47	78	31	66%	46	68	22	48%
		Total	453	426	-27	-6%	401	362	-39	-10%
	40th Circuit Totals	Criminal	571	630	59	10%	544	514	-30	-6%
		Civil	195	157	-38	-19%	156	223	67	43%
		Domestic	197	223	26	13%	175	207	32	18%
		Total	963	1010	47	5%	875	944	69	8%

Table 1: Circuit Court Caseload Statistics, Fiscal Years 2006 and 2007

Circuit	County	Jurisdiction	Filed in 06	Filed in 07	Change 06-07		Disp. in 06	Disp. in 07	Change 06-07	
41ST	Blount	Criminal	974	774	-200	-21%	714	696	-18	-3%
		Civil	381	463	82	22%	387	342	-45	-12%
		Domestic	439	427	-12	-3%	347	324	-23	-7%
		Juvenile	0	0	0	0%	1	0	-1	0%
		Total	1794	1664	-130	-7%	1449	1362	-87	-6%

***** ALABAMA STATEWIDE CIRCUIT COURT TOTALS *****

Jurisdiction	Case Filings		Change 2006-2007		Case Dispositions		Change 2006-2007	
	2006	2007	# +/-	%	2006	2007	# +/-	%
Criminal	81626	80,582	-1,044	-1%	79524	80,862	1,338	2%
Civil	47034	46,518	-516	-1%	47018	46,394	-624	-1%
Domestic	50179	49,339	-840	-2%	49273	48,428	-845	-2%
Juvenile	23410	25,071	1,661	7%	22723	23,634	911	4%
Child Support	16,692	16,882	190	1%	16,816	16,843	27	0%
Total	218,941	218,392	-549	-0.3%	215,354	216,161	807	0.4%

Table 2: District Court Caseload Statistics, Fiscal Years 2006 and 2007

Table 2: District Court Caseload Statistics, Fiscal Years 2006 and 2007

County	Jurisdiction	Cases Filed		Change 2006-2007		Cases Disposed		Change 2006-2007	
		2006	2007	# +/-	%	2006	2007	# +/-	%
Autauga	Traffic	5,144	5,906	762	15%	4,692	6,126	1,434	31%
	Criminal	1,206	1,249	43	4%	1,198	1,186	-12	-1%
	Small Claims	1,143	1,082	-61	-5%	1,049	1,246	197	19%
	Civil	399	367	-32	-8%	363	406	43	12%
	Juvenile	602	697	95	16%	591	649	58	10%
	Child Support	444	396	-48	-11%	402	425	23	6%
	Total	8,938	9,697	759	8%	8,295	10,038	1,743	21%
Baldwin	Traffic	17,049	23,735	6,686	39%	15,393	21,492	6,099	40%
	Criminal	6,912	6,302	-610	-9%	6,979	6,287	-692	-10%
	Small Claims	2,848	2,872	24	1%	2,299	2,840	541	24%
	Civil	1,428	1,485	57	4%	1,095	1,345	250	23%
	Juvenile	2,497	Reported in Circuit Court			2,294	Reported in Circuit Court		
	Child Support	767				724			
	Total	31,501	34,394	2,893	9%	28,784	31,964	3,180	11%
Barbour - Clayton	Traffic	1,140	1,281	141	12%	1,140	1,228	88	8%
	Criminal	453	539	86	19%	419	503	84	20%
	Small Claims	154	151	-3	-2%	131	151	20	15%
	Civil	42	27	-15	-36%	30	29	-1	-3%
	Juvenile	143	148	5	3%	142	136	-6	-4%
	Child Support	200	768	568	284%	417	1,168	751	180%
	Total	2,132	2,914	782	37%	2,279	3,215	936	41%
Barbour - Eufaula	Traffic	1,996	2,848	852	43%	1,978	2,718	740	37%
	Criminal	556	635	79	14%	581	590	9	2%
	Small Claims	734	762	28	4%	714	704	-10	-1%
	Civil	107	115	8	7%	84	113	29	35%
	Juvenile	307	258	-49	-16%	298	267	-31	-10%
	Child Support	2	1	-1	-50%	0	0	0	0%
	Total	3,702	4,619	917	25%	3,655	4,392	737	20%
Barbour Totals	Traffic	3,136	4,129	993	32%	3,118	3,946	828	27%
	Criminal	1,009	1,174	165	16%	1,000	1,093	93	9%
	Small Claims	888	913	25	3%	845	855	10	1%
	Civil	149	142	-7	-5%	114	142	28	25%
	Juvenile	450	406	-44	-10%	440	403	-37	-8%
	Child Support	202	769	567	281%	417	1,168	751	180%
	Total	5,834	7,533	1,699	29%	5,934	7,607	1,673	28%
Bibb	Traffic	2,398	4,104	1,706	71%	2,236	3,872	1,636	73%
	Criminal	981	1,148	167	17%	846	1,200	354	42%
	Small Claims	350	288	-62	-18%	332	288	-44	-13%
	Civil	118	126	8	7%	102	118	16	16%
	Juvenile	543	536	-7	-1%	516	533	17	3%
	Child Support	232	259	27	12%	200	236	36	18%
	Total	4,622	6,461	1,839	40%	4,232	6,247	2,015	48%

Table 2: District Court Caseload Statistics, Fiscal Years 2006 and 2007

County	Jurisdiction	Filed in 06	Filed in 07	Change 06-07		Disp. in 06	Disp. in 07	Change 06-07	
Blount	Traffic	3,568	4,999	1,431	40%	3,435	4,496	1,061	31%
	Criminal	2,087	2,075	-12	-1%	2,025	2,151	126	6%
	Small Claims	556	647	91	16%	592	626	34	6%
	Civil	231	244	13	6%	212	261	49	23%
	Juvenile	439	445	6	1%	415	478	63	15%
	Child Support	164	148	-16	-10%	72	108	36	50%
	Total	7,045	8,558	1,513	21%	6,751	8,120	1,369	20%
Bullock	Traffic	2,949	2,593	-356	-12%	3,044	2,613	-431	-14%
	Criminal	669	613	-56	-8%	626	619	-7	-1%
	Small Claims	266	219	-47	-18%	226	177	-49	-22%
	Civil	75	89	14	19%	60	72	12	20%
	Juvenile	77	74	-3	-4%	56	66	10	18%
	Child Support	324	267	-57	-18%	245	245	0	0%
	Total	4,360	3,855	-505	-12%	4,257	3,792	-465	-11%
Butler	Traffic	9,227	10,224	997	11%	7,405	10,138	2,733	37%
	Criminal	1,562	2,002	440	28%	1,568	1,929	361	23%
	Small Claims	924	955	31	3%	857	1,018	161	19%
	Civil	155	185	30	19%	148	146	-2	-1%
	Juvenile	216	214	-2	-1%	145	200	55	38%
	Child Support	306	365	59	19%	204	239	35	17%
	Total	12,390	13,945	1,555	13%	10,327	13,670	3,343	32%
Calhoun	Traffic	15,231	19,327	4,096	27%	13,901	17,951	4,050	29%
	Criminal	7,798	8,050	252	3%	7,246	7,180	-66	-1%
	Small Claims	2,096	1,839	-257	-12%	2,055	2,091	36	2%
	Civil	1,082	1,015	-67	-6%	1,079	974	-105	-10%
	Total	26,207	30,231	4,024	15%	24,281	28,196	3,915	16%
Chambers	Traffic	4,488	7,744	3,256	73%	4,390	6,893	2,503	57%
	Criminal	2,685	2,869	184	7%	2,651	3,131	480	18%
	Small Claims	1,312	1,482	170	13%	1,184	1,652	468	40%
	Civil	270	296	26	10%	254	342	88	35%
	Juvenile	467	438	-29	-6%	405	429	24	6%
	Child Support	414	350	-64	-15%	411	358	-53	-13%
	Total	9,636	13,179	3,543	37%	9,295	12,805	3,510	38%
Cherokee	Traffic	1,781	1,566	-215	-12%	1,818	1,422	-396	-22%
	Criminal	1,507	1,347	-160	-11%	1,624	1,622	-2	0%
	Small Claims	241	331	90	37%	189	393	204	108%
	Civil	117	114	-3	-3%	126	137	11	9%
	Juvenile	762	882	120	16%	705	894	189	27%
	Child Support	283	197	-86	-30%	227	273	46	20%
	Total	4,691	4,437	-254	-5%	4,689	4,741	52	1%
Chilton	Traffic	5,331	11,626	6,295	118%	4,658	11,279	6,621	142%
	Criminal	2,586	2,678	92	4%	2,423	2,625	202	8%
	Small Claims	1,002	902	-100	-10%	1,078	647	-431	-40%
	Civil	281	292	11	4%	295	186	-109	-37%
	Juvenile	473	403	-70	-15%	429	400	-29	-7%
	Child Support	347	317	-30	-9%	362	309	-53	-15%
	Total	10,020	16,218	6,198	62%	9,245	15,446	6,201	67%

Table 2: District Court Caseload Statistics, Fiscal Years 2006 and 2007

County	Jurisdiction	Filed in 06	Filed in 07	Change 06-07		Disp. in 06	Disp. in 07	Change 06-07	
Choctaw	Traffic	2,205	2,465	260	12%	2,047	2,163	116	6%
	Criminal	715	980	265	37%	731	858	127	17%
	Small Claims	453	432	-21	-5%	369	386	17	5%
	Civil	93	76	-17	-18%	85	75	-10	-12%
	Juvenile	70	105	35	50%	62	94	32	52%
	Child Support	197	188	-9	-5%	156	168	12	8%
	Total	3,733	4,246	513	14%	3,450	3,744	294	9%
Clarke	Traffic	2,320	3,013	693	30%	2,300	2,503	203	9%
	Criminal	1,751	1,925	174	10%	1,710	1,745	35	2%
	Small Claims	1,333	996	-337	-25%	910	980	70	8%
	Civil	174	221	47	27%	139	168	29	21%
	Juvenile	216	279	63	29%	203	253	50	25%
	Child Support	575	478	-97	-17%	583	465	-118	-20%
	Total	6,369	6,912	543	9%	5,845	6,114	269	5%
Clay	Traffic	1,148	1,809	661	58%	1,026	1,645	619	60%
	Criminal	688	841	153	22%	730	643	-87	-12%
	Small Claims	275	230	-45	-16%	242	247	5	2%
	Civil	56	67	11	20%	52	58	6	12%
	Juvenile	154	167	13	8%	135	152	17	13%
	Child Support	183	167	-16	-9%	149	192	43	29%
	Total	2,504	3,281	777	31%	2,334	2,937	603	26%
Cleburne	Traffic	9,998	11,276	1,278	13%	10,339	10,018	-321	-3%
	Criminal	729	994	265	36%	788	858	70	9%
	Small Claims	147	206	59	40%	146	206	60	41%
	Civil	55	81	26	47%	57	69	12	21%
	Juvenile	In Circuit	202	202		In Circuit	202	202	
	Child Support	Court Rpt	111	111		Court Rpt	103	103	
	Total	10,929	12,870	1,941	18%	11,330	11,456	126	1%
Coffee - Elba	Traffic	2,707	2,599	-108	-4%	2,652	2,478	-174	-7%
	Criminal	804	890	86	11%	662	801	139	21%
	Small Claims	509	492	-17	-3%	447	546	99	22%
	Civil	71	78	7	10%	72	68	-4	-6%
	Juvenile	246	217	-29	-12%	240	232	-8	-3%
	Child Support	95	89	-6	-6%	79	110	31	39%
	Total	4,432	4,365	-67	-2%	4,152	4,235	83	2%
Coffee - Enterprise	Traffic	2,593	2,666	73	3%	2,588	2,668	80	3%
	Criminal	1,993	1,476	-517	-26%	1,759	1,566	-193	-11%
	Small Claims	1,191	1,195	4	0%	1,330	1,360	30	2%
	Civil	226	276	50	22%	348	301	-47	-14%
	Juvenile	968	697	-271	-28%	992	713	-279	-28%
	Child Support	199	247	48	24%	191	260	69	36%
	Total	7,170	6,557	-613	-9%	7,208	6,868	-340	-5%
Coffee Totals	Traffic	5,300	5,265	-35	-1%	5,240	5,146	-94	-2%
	Criminal	2,797	2,366	-431	-15%	2,421	2,367	-54	-2%
	Small Claims	1,700	1,687	-13	-1%	1,777	1,906	129	7%
	Civil	297	354	57	19%	420	369	-51	-12%
	Juvenile	1,214	914	-300	-25%	1,232	945	-287	-23%
	Child Support	294	336	42	14%	270	370	100	37%
	Total	11,602	10,922	-680	-6%	11,360	11,103	-257	-2%

Table 2: District Court Caseload Statistics, Fiscal Years 2006 and 2007

County	Jurisdiction	Filed in 06	Filed in 07	Change 06-07		Disp. in 06	Disp. in 07	Change 06-07	
Colbert	Traffic	5,413	9,634	4,221	78%	4,402	9,220	4,818	109%
	Criminal	1,551	1,693	142	9%	1,642	1,650	8	0%
	Small Claims	1,361	1,763	402	30%	1,125	1,508	383	34%
	Civil	431	409	-22	-5%	361	380	19	5%
	Juvenile	530	564	34	6%	426	445	19	4%
	Child Support	309	326	17	6%	274	299	25	9%
	Total	9,595	14,389	4,794	50%	8,230	13,502	5,272	64%
Conecuh	Traffic	4,824	6,897	2,073	43%	3,890	6,423	2,533	65%
	Criminal	623	639	16	3%	559	608	49	9%
	Small Claims	704	387	-317	-45%	502	658	156	31%
	Civil	73	63	-10	-14%	80	63	-17	-21%
	Juvenile	102	179	77	75%	96	162	66	69%
	Child Support	246	312	66	27%	169	154	-15	-9%
	Total	6,572	8,477	1,905	29%	5,296	8,068	2,772	52%
Coosa	Traffic	2,226	3,626	1,400	63%	2,213	2,846	633	29%
	Criminal	680	765	85	13%	693	750	57	8%
	Small Claims	202	174	-28	-14%	178	170	-8	-4%
	Civil	57	63	6	11%	56	58	2	4%
	Juvenile	179	163	-16	-9%	176	170	-6	-3%
	Child Support	33	84	51	155%	37	85	48	130%
	Total	3,377	4,875	1,498	44%	3,353	4,079	726	22%
Covington	Traffic	1,917	4,851	2,934	153%	1,715	4,289	2,574	150%
	Criminal	3,291	3,925	634	19%	2,897	3,775	878	30%
	Small Claims	923	864	-59	-6%	894	950	56	6%
	Civil	275	261	-14	-5%	266	279	13	5%
	Juvenile	707	783	76	11%	713	825	112	16%
	Child Support	429	469	40	9%	441	414	-27	-6%
	Total	7,542	11,153	3,611	48%	6,926	10,532	3,606	52%
Crenshaw	Traffic	2,548	5,759	3,211	126%	2,154	5,379	3,225	150%
	Criminal	859	937	78	9%	846	965	119	14%
	Small Claims	379	324	-55	-15%	373	323	-50	-13%
	Civil	87	108	21	24%	86	100	14	16%
	Juvenile	150	232	82	55%	140	205	65	46%
	Child Support	166	200	34	20%	105	172	67	64%
	Total	4,189	7,560	3,371	80%	3,704	7,144	3,440	93%
Cullman	Traffic	20,831	15,584	-5,247	-25%	21,003	15,212	-5,791	-28%
	Criminal	4,005	3,887	-118	-3%	4,161	4,153	-8	0%
	Small Claims	1,626	1,809	183	11%	1,569	2,127	558	36%
	Civil	611	541	-70	-11%	501	634	133	27%
	Juvenile	788	889	101	13%	717	1,019	302	42%
	Child Support	381	372	-9	-2%	537	310	-227	-42%
	Total	28,242	23,082	-5,160	-18%	28,488	23,455	-5,033	-18%
Dale	Traffic	2,983	3,715	732	25%	2,574	3,731	1,157	45%
	Criminal	1,541	1,186	-355	-23%	1,476	1,223	-253	-17%
	Small Claims	1,322	1,240	-82	-6%	993	1,213	220	22%
	Civil	279	367	88	32%	228	384	156	68%
	Juvenile	926	951	25	3%	888	858	-30	-3%
	Child Support	688	665	-23	-3%	727	589	-138	-19%
	Total	7,739	8,124	385	5%	6,886	7,998	1,112	16%

Table 2: District Court Caseload Statistics, Fiscal Years 2006 and 2007

County	Jurisdiction	Filed in 06	Filed in 07	Change 06-07		Disp. in 06	Disp. in 07	Change 06-07	
Dallas	Traffic	7,713	11,267	3,554	46%	6,548	9,440	2,892	44%
	Criminal	1,652	1,984	332	20%	1,585	1,883	298	19%
	Small Claims	1,304	1,070	-234	-18%	734	827	93	13%
	Civil	377	439	62	16%	465	344	-121	-26%
	Juvenile	809	810	1	0%	805	744	-61	-8%
	Child Support	723	806	83	11%	787	930	143	18%
	Total	12,578	16,376	3,798	30%	10,924	14,168	3,244	30%
DeKalb	Traffic	3,977	5,435	1,458	37%	3,905	4,982	1,077	28%
	Criminal	1,654	1,959	305	18%	2,015	1,890	-125	-6%
	Small Claims	709	1,222	513	72%	740	676	-64	-9%
	Civil	305	405	100	33%	209	332	123	59%
	Juvenile	850	900	50	6%	723	681	-42	-6%
	Child Support	296	274	-22	-7%	212	197	-15	-7%
	Total	7,791	10,195	2,404	31%	7,804	8,758	954	12%
Elmore	Traffic	7,839	9,755	1,916	24%	7,821	9,161	1,340	17%
	Criminal	3,147	3,390	243	8%	3,096	3,389	293	9%
	Small Claims	1,416	1,466	50	4%	1,502	1,406	-96	-6%
	Civil	548	560	12	2%	549	560	11	2%
	Juvenile	962	921	-41	-4%	937	980	43	5%
	Child Support	532	544	12	2%	515	611	96	19%
	Total	14,444	16,636	2,192	15%	14,420	16,107	1,687	12%
Escambia	Traffic	6,992	8,899	1,907	27%	6,416	8,495	2,079	32%
	Criminal	2,004	1,725	-279	-14%	1,784	1,443	-341	-19%
	Small Claims	902	740	-162	-18%	1,054	752	-302	-29%
	Civil	209	298	89	43%	312	259	-53	-17%
	Juvenile	656	501	-155	-24%	664	391	-273	-41%
	Child Support	496	383	-113	-23%	351	458	107	30%
	Total	11,259	12,546	1,287	11%	10,581	11,798	1,217	12%
Etowah	Traffic	5,209	7,297	2,088	40%	5,434	6,757	1,323	24%
	Criminal	4,014	3,957	-57	-1%	3,995	3,877	-118	-3%
	Small Claims	2,688	2,631	-57	-2%	2,944	3,601	657	22%
	Civil	1,124	1,180	56	5%	1,235	1,207	-28	-2%
	Juvenile	1,308	1,201	-107	-8%	1,228	1,167	-61	-5%
	Child Support	836	730	-106	-13%	894	759	-135	-15%
	Total	15,179	16,996	1,817	12%	15,730	17,368	1,638	10%
Fayette	Traffic	1,821	3,081	1,260	69%	1,735	2,915	1,180	68%
	Criminal	916	1,103	187	20%	801	1,036	235	29%
	Small Claims	299	306	7	2%	252	280	28	11%
	Civil	75	94	19	25%	67	68	1	1%
	Juvenile	293	286	-7	-2%	288	287	-1	0%
	Child Support	163	153	-10	-6%	201	187	-14	-7%
	Total	3,567	5,023	1,456	41%	3,344	4,773	1,429	43%
Franklin	Traffic	4,711	4,966	255	5%	5,176	4,936	-240	-5%
	Criminal	2,081	1,600	-481	-23%	2,268	1,604	-664	-29%
	Small Claims	712	696	-16	-2%	715	693	-22	-3%
	Civil	179	186	7	4%	180	194	14	8%
	Juvenile	456	531	75	16%	442	498	56	13%
	Child Support	180	174	-6	-3%	200	185	-15	-8%
	Total	8,319	8,153	-166	-2%	8,981	8,110	-871	-10%

Table 2: District Court Caseload Statistics, Fiscal Years 2006 and 2007

County	Jurisdiction	Filed in 06	Filed in 07	Change 06-07		Disp. in 06	Disp. in 07	Change 06-07	
Geneva	Traffic	2,946	2,706	-240	-8%	2,848	2,987	139	5%
	Criminal	1,386	1,061	-325	-23%	1,527	1,434	-93	-6%
	Small Claims	569	499	-70	-12%	510	527	17	3%
	Civil	175	178	3	2%	241	143	-98	-41%
	Juvenile	524	619	95	18%	483	461	-22	-5%
	Child Support	459	400	-59	-13%	445	411	-34	-8%
	Total	6,059	5,463	-596	-10%	6,054	5,963	-91	-2%
Greene	Traffic	2,469	5,190	2,721	110%	2,095	4,527	2,432	116%
	Criminal	485	541	56	12%	506	470	-36	-7%
	Small Claims	115	170	55	48%	168	141	-27	-16%
	Civil	57	67	10	18%	87	57	-30	-34%
	Juvenile	132	150	18	14%	131	128	-3	-2%
	Child Support	379	326	-53	-14%	356	345	-11	-3%
	Total	3,637	6,444	2,807	77%	3,343	5,668	2,325	70%
Hale	Traffic	2,806	5,058	2,252	80%	2,951	4,549	1,598	54%
	Criminal	630	844	214	34%	707	836	129	18%
	Small Claims	558	473	-85	-15%	414	556	142	34%
	Civil	86	100	14	16%	77	99	22	29%
	Juvenile	187	164	-23	-12%	154	159	5	3%
	Child Support	316	393	77	24%	275	261	-14	-5%
	Total	4,583	7,032	2,449	53%	4,578	6,460	1,882	41%
Henry	Traffic	2,797	6,415	3,618	129%	3,114	5,226	2,112	68%
	Criminal	1,078	1,195	117	11%	1,138	1,062	-76	-7%
	Small Claims	637	629	-8	-1%	671	669	-2	0%
	Civil	81	84	3	4%	98	89	-9	-9%
	Juvenile	253	269	16	6%	237	259	22	9%
	Child Support	213	224	11	5%	212	188	-24	-11%
	Total	5,059	8,816	3,757	74%	5,470	7,493	2,023	37%
Houston	Traffic	5,378	10,976	5,598	104%	5,098	9,989	4,891	96%
	Criminal	5,684	4,963	-721	-13%	5,382	4,588	-794	-15%
	Small Claims	4,880	5,138	258	5%	4,292	5,240	948	22%
	Civil	1,120	1,344	224	20%	1,082	1,187	105	10%
	Total	17,062	22,421	5,359	31%	15,854	21,004	5,150	32%
Jackson	Traffic	2,774	6,518	3,744	135%	2,534	6,213	3,679	145%
	Criminal	3,247	3,643	396	12%	3,452	3,593	141	4%
	Small Claims	1,217	1,147	-70	-6%	1,020	984	-36	-4%
	Civil	287	306	19	7%	253	274	21	8%
	Juvenile	764	864	100	13%	791	845	54	7%
	Child Support	454	492	38	8%	464	429	-35	-8%
	Total	8,743	12,970	4,227	48%	8,514	12,338	3,824	45%
Jefferson - Bessemer	Traffic	4,350	5,245	895	21%	4,020	4,950	930	23%
	Criminal	5,091	4,758	-333	-7%	5,034	4,669	-365	-7%
	Small Claims	2,433	1,879	-554	-23%	1,820	3,262	1,442	79%
	Civil	1,277	1,113	-164	-13%	1,143	1,745	602	53%
	Juvenile	1,242	1,368	126	10%	1,067	1,219	152	14%
	Child Support	1,207	1,023	-184	-15%	680	1,027	347	51%
	Total	15,600	15,386	-214	-1%	13,764	16,872	3,108	23%

Table 2: District Court Caseload Statistics, Fiscal Years 2006 and 2007

County	Jurisdiction	Filed in 06	Filed in 07	Change 06-07		Disp. in 06	Disp. in 07	Change 06-07	
Jefferson - Birmingham	Traffic	23,688	28,748	5,060	21%	22,542	25,901	3,359	15%
	Criminal	16,931	15,863	-1,068	-6%	16,821	15,124	-1,697	-10%
	Small Claims	13,884	13,949	65	0%	13,088	12,933	-155	-1%
	Civil	9,127	8,545	-582	-6%	8,867	7,710	-1,157	-13%
	Juvenile	Jefferson-Birmingham Juvenile and Child Support Cases are included in Jefferson-Bessemer Numbers							
	Child Support								
	Total	63,630	67,105	3,475	5%	61,318	61,668	350	1%
Jefferson	Traffic	28,038	33,993	5,955	21%	26,562	30,851	4,289	16%
	Criminal	22,022	20,621	-1,401	-6%	21,855	19,793	-2,062	-9%
	Small Claims	16,317	15,828	-489	-3%	14,908	16,195	1,287	9%
	Civil	10,404	9,658	-746	-7%	10,010	9,455	-555	-6%
	Juvenile	1,242	1,368	126	10%	1,067	1,219	152	14%
	Child Support	1,207	1,023	-184	-15%	680	1,027	347	51%
	Total	79,230	82,491	3,261	4%	75,082	78,540	3,458	5%
Lamar	Traffic	3,166	2,366	-800	-25%	3,052	2,516	-536	-18%
	Criminal	974	1,224	250	26%	985	1,217	232	24%
	Small Claims	190	177	-13	-7%	180	178	-2	-1%
	Civil	63	87	24	38%	55	83	28	51%
	Juvenile	149	156	7	5%	158	147	-11	-7%
	Child Support	123	117	-6	-5%	126	98	-28	-22%
	Total	4,665	4,127	-538	-12%	4,556	4,239	-317	-7%
Lauderdale	Traffic	8,795	10,635	1,840	21%	8,467	10,228	1,761	21%
	Criminal	3,999	4,121	122	3%	4,032	4,104	72	2%
	Small Claims	1,281	1,927	646	50%	1,229	1,716	487	40%
	Civil	497	593	96	19%	506	544	38	8%
	Total	14,572	17,276	2,704	19%	14,234	16,592	2,358	17%
Lawrence	Traffic	6,693	4,836	-1,857	-28%	6,771	5,157	-1,614	-24%
	Criminal	1,740	1,546	-194	-11%	1,700	1,566	-134	-8%
	Small Claims	472	405	-67	-14%	465	427	-38	-8%
	Civil	162	207	45	28%	172	191	19	11%
	Juvenile	442	480	38	9%	497	377	-120	-24%
	Child Support	229	227	-2	-1%	253	236	-17	-7%
	Total	9,738	7,701	-2,037	-21%	9,858	7,954	-1,904	-19%
Lee	Traffic	9,564	13,748	4,184	44%	9,387	12,796	3,409	36%
	Criminal	4,399	5,094	695	16%	4,366	4,703	337	8%
	Small Claims	2,655	2,908	253	10%	2,423	2,568	145	6%
	Civil	1,080	1,029	-51	-5%	891	771	-120	-13%
	Total	17,698	22,779	5,081	29%	17,067	20,838	3,771	22%
Limestone	Traffic	11,646	12,691	1,045	9%	10,917	13,492	2,575	24%
	Criminal	3,722	3,840	118	3%	3,876	3,765	-111	-3%
	Small Claims	962	875	-87	-9%	1,099	772	-327	-30%
	Civil	436	523	87	20%	475	406	-69	-15%
	Juvenile	649	704	55	8%	651	666	15	2%
	Child Support	In Circuit Rpt	296	296		In Circuit Rpt	326	326	
	Total	17,415	18,929	1,514	9%	17,018	19,427	2,409	14%

Table 2: District Court Caseload Statistics, Fiscal Years 2006 and 2007

County	Jurisdiction	Filed in 06	Filed in 07	Change 06-07		Disp. in 06	Disp. in 07	Change 06-07	
Lowndes	Traffic	5,433	6,996	1,563	29%	4,794	6,296	1,502	31%
	Criminal	926	943	17	2%	895	890	-5	-1%
	Small Claims	254	214	-40	-16%	201	221	20	10%
	Civil	107	110	3	3%	84	97	13	15%
	Juvenile	173	246	73	42%	170	236	66	39%
	Child Support	376	305	-71	-19%	533	357	-176	-33%
	Total	7,269	8,814	1,545	21%	6,677	8097	1,420	21%
Macon	Traffic	3,814	6,515	2,701	71%	3,058	6064	3,006	98%
	Criminal	565	638	73	13%	521	544	23	4%
	Small Claims	650	546	-104	-16%	476	981	505	106%
	Civil	188	196	8	4%	135	262	127	94%
	Juvenile	268	254	-14	-5%	141	103	-38	-27%
	Child Support	333	340	7	2%	204	247	43	21%
	Total	5,818	8,489	2,671	46%	4,535	8201	3,666	81%
Madison	Traffic	10,507	15,620	5,113	49%	9,652	14097	4,445	46%
	Criminal	10,240	11,376	1,136	11%	9,892	10552	660	7%
	Small Claims	6,361	5,744	-617	-10%	5,268	5145	-123	-2%
	Civil	3,200	3,477	277	9%	3,128	3041	-87	-3%
	Juvenile	2,433	2,395	-38	-2%	2,248	2309	61	3%
	Child Support	1,122	962	-160	-14%	1,074	1010	-64	-6%
	Total	33,863	39,574	5,711	17%	31,262	36154	4,892	16%
Marengo	Traffic	2,696	4,229	1,533	57%	2,483	3876	1,393	56%
	Criminal	829	1,167	338	41%	787	1081	294	37%
	Small Claims	848	745	-103	-12%	721	673	-48	-7%
	Civil	143	170	27	19%	120	150	30	25%
	Juvenile	281	341	60	21%	281	344	63	22%
	Child Support	485	437	-48	-10%	331	364	33	10%
	Total	5,282	7,089	1,807	34%	4,723	6488	1,765	37%
Marion	Traffic	6,874	11,906	5,032	73%	7,270	10775	3,505	48%
	Criminal	2,028	1,707	-321	-16%	2,043	1588	-455	-22%
	Small Claims	581	702	121	21%	548	586	38	7%
	Civil	174	191	17	10%	930	150	-780	-84%
	Juvenile	432	428	-4	-1%	424	371	-53	-13%
	Child Support	138	245	107	78%	93	179	86	92%
	Total	10,227	15,179	4,952	48%	11,308	13649	2,341	21%
Marshall - Albertville	Traffic	2,495	4,503	2,008	80%	2,368	4174	1,806	76%
	Criminal	916	991	75	8%	807	1010	203	25%
	Small Claims	1,033	1,092	59	6%	972	1035	63	6%
	Civil	300	376	76	25%	300	322	22	7%
	Juvenile	1,024	973	-51	-5%	895	943	48	5%
	Child Support	301	358	57	19%	281	294	13	5%
	Total	6,069	8,293	2,224	37%	5,623	7778	2,155	38%
Marshall - Guntersville	Traffic	2,669	4,337	1,668	62%	2,343	4211	1,868	80%
	Criminal	1,254	1,316	62	5%	1,206	1228	22	2%
	Small Claims	757	856	99	13%	739	822	83	11%
	Civil	329	375	46	14%	369	315	-54	-15%
	Juvenile	615	631	16	3%	570	641	71	12%
	Child Support	235	328	93	40%	239	243	4	2%
	Total	5,859	7,843	1,984	34%	5,466	7460	1,994	36%

Table 2: District Court Caseload Statistics, Fiscal Years 2006 and 2007

County	Jurisdiction	Filed in 06	Filed in 07	Change 06-07		Disp. in 06	Disp. in 07	Change 06-07	
Marshall	Traffic	5,164	8,840	3,676	71%	4,711	8385	3,674	78%
Totals	Criminal	2,170	2,307	137	6%	2,013	2238	225	11%
	Small Claims	1,790	1,948	158	9%	1,711	1857	146	9%
	Civil	629	751	122	19%	669	637	-32	-5%
	Juvenile	1,639	1,604	-35	-2%	1,465	1584	119	8%
	Child Support	536	686	150	28%	520	537	17	3%
	Total	11,928	16,136	4,208	35%	11,089	15238	4,149	37%
Mobile	Traffic	26,654	37,313	10,659	40%	24,015	35131	11,116	46%
	Criminal	18,687	17,828	-859	-5%	18,308	18103	-205	-1%
	Small Claims	7,946	8,025	79	1%	7,968	6774	-1,194	-15%
	Civil	4,711	4,864	153	3%	5,211	3921	-1,290	-25%
	Total	57,998	68,030	10,032	17%	55,502	63929	8,427	15%
Monroe	Traffic	2,604	3,376	772	30%	2,380	3386	1,006	42%
	Criminal	780	852	72	9%	784	848	64	8%
	Small Claims	829	643	-186	-22%	828	903	75	9%
	Civil	167	196	29	17%	143	217	74	52%
	Juvenile	297	321	24	8%	323	259	-64	-20%
	Child Support	280	315	35	13%	239	284	45	19%
	Total	4,957	5,703	746	15%	4,697	5897	1,200	26%
Montgomery	Traffic	19,877	33,759	13,882	70%	16,897	31322	14,425	85%
	Criminal	5,196	5,194	-2	0%	4,928	5353	425	9%
	Small Claims	8,700	8,543	-157	-2%	12,629	9570	-3,059	-24%
	Civil	4,879	4,555	-324	-7%	5,780	4542	-1,238	-21%
	Total	38,652	52,051	13,399	35%	40,234	50787	10,553	26%
Morgan	Traffic	7,178	12,809	5,631	78%	6,790	12024	5,234	77%
	Criminal	3,747	3,503	-244	-7%	3,739	3580	-159	-4%
	Small Claims	3,070	2,907	-163	-5%	2,930	2683	-247	-8%
	Civil	1,046	1,062	16	2%	1,017	948	-69	-7%
	Juvenile	1,255	1,334	79	6%	1,222	1312	90	7%
	Child Support	983	964	-19	-2%	790	1037	247	31%
	Total	17,279	22,579	5,300	31%	16,488	21584	5,096	31%
Perry	Traffic	2,936	3,080	144	5%	2,794	2700	-94	-3%
	Criminal	497	303	-194	-39%	514	326	-188	-37%
	Small Claims	206	184	-22	-11%	209	259	50	24%
	Civil	74	84	10	14%	89	78	-11	-12%
	Juvenile	61	53	-8	-13%	69	44	-25	-36%
	Child Support	467	449	-18	-4%	519	477	-42	-8%
	Total	4,241	4,153	-88	-2%	4,194	3884	-310	-7%
Pickens	Traffic	1,560	1,711	151	10%	1,729	1486	-243	-14%
	Criminal	1,205	1,324	119	10%	1,184	1204	20	2%
	Small Claims	357	336	-21	-6%	324	350	26	8%
	Civil	93	85	-8	-9%	66	87	21	32%
	Juvenile	243	289	46	19%	227	263	36	16%
	Child Support	410	320	-90	-22%	419	319	-100	-24%
	Total	3,868	4,065	197	5%	3,949	3709	-240	-6%

Table 2: District Court Caseload Statistics, Fiscal Years 2006 and 2007

County	Jurisdiction	Filed in 06	Filed in 07	Change 06-07		Disp. in 06	Disp. in 07	Change 06-07	
Pike	Traffic	4,560	7,386	2,826	62%	4,533	6817	2,284	50%
	Criminal	1,248	810	-438	-35%	1,158	876	-282	-24%
	Small Claims	1,435	1,555	120	8%	1,417	1528	111	8%
	Civil	291	281	-10	-3%	286	289	3	1%
	Juvenile	655	551	-104	-16%	664	547	-117	-18%
	Child Support	439	380	-59	-13%	463	380	-83	-18%
	Total	8,628	10,963	2,335	27%	8,521	10437	1,916	22%
Randolph	Traffic	1,437	1,150	-287	-20%	1,294	1303	9	1%
	Criminal	856	708	-148	-17%	848	750	-98	-12%
	Small Claims	532	619	87	16%	547	599	52	10%
	Civil	98	134	36	37%	97	125	28	29%
	Juvenile	241	294	53	22%	257	331	74	29%
	Child Support	129	178	49	38%	73	163	90	123%
	Total	3,293	3,083	-210	-6%	3,116	3271	155	5%
Russell	Traffic	7,746	6,464	-1,282	-17%	7,131	6810	-321	-5%
	Criminal	3,040	2,592	-448	-15%	2,937	2764	-173	-6%
	Small Claims	1,093	1,100	7	1%	1,032	1106	74	7%
	Civil	625	691	66	11%	642	674	32	5%
	Juvenile	1,629	1,677	48	3%	1,522	1458	-64	-4%
	Child Support	640	627	-13	-2%	1,152	957	-195	-17%
	Total	14,773	13,151	-1,622	-11%	14,416	13769	-647	-4%
St. Clair - Ashville	Traffic	2,105	3,403	1,298	62%	2,100	2634	534	25%
	Criminal	899	892	-7	-1%	784	820	36	5%
	Small Claims	311	332	21	7%	228	332	104	46%
	Civil	159	185	26	16%	125	149	24	19%
	Juvenile	818	675	-143	-17%	776	694	-82	-11%
	Child Support	111	119	8	7%	21	25	4	19%
	Total	4,403	5,606	1,203	27%	4,034	4654	620	15%
St. Clair - Pell City	Traffic	12,303	5,312	-6,991	-57%	11,876	6500	-5,376	-45%
	Criminal	1,497	1,634	137	9%	1,533	1538	5	0%
	Small Claims	851	777	-74	-9%	767	802	35	5%
	Civil	303	340	37	12%	318	332	14	4%
	Juvenile	859	1,255	396	46%	823	1205	382	46%
	Child Support	217	232	15	7%	186	173	-13	-7%
	Total	16,030	9,550	-6,480	-40%	15,503	10550	-4,953	-32%
St. Clair Totals	Traffic	14,408	8,715	-5,693	-40%	13,976	9134	-4,842	-35%
	Criminal	2,396	2,526	130	5%	2,317	2358	41	2%
	Small Claims	1,162	1,109	-53	-5%	995	1134	139	14%
	Civil	462	525	63	14%	443	481	38	9%
	Juvenile	1,677	1,930	253	15%	1,599	1899	300	19%
	Child Support	328	351	23	7%	207	198	-9	-4%
	Total	20,433	15,156	-5,277	-26%	19,537	15204	-4,333	-22%
Shelby	Traffic	13,374	15,421	2,047	15%	12,052	14567	2,515	21%
	Criminal	5,868	6,173	305	5%	5,669	6904	1,235	22%
	Small Claims	2,045	2,159	114	6%	1,560	1420	-140	-9%
	Civil	1,176	1,245	69	6%	963	977	14	1%
	Juvenile	1,527	1,627	100	7%	1,426	1540	114	8%
	Child Support	659	609	-50	-8%	596	555	-41	-7%
	Total	24,649	27,234	2,585	10%	22,266	25963	3,697	17%

Table 2: District Court Caseload Statistics, Fiscal Years 2006 and 2007

County	Jurisdiction	Filed in 06	Filed in 07	Change 06-07		Disp. in 06	Disp. in 07	Change 06-07	
Sumter	Traffic	5,650	6,679	1,029	18%	5,336	6899	1,563	29%
	Criminal	531	584	53	10%	531	582	51	10%
	Small Claims	267	255	-12	-4%	239	281	42	18%
	Civil	65	75	10	15%	63	71	8	13%
	Juvenile	122	101	-21	-17%	127	104	-23	-18%
	Child Support	361	333	-28	-8%	366	354	-12	-3%
	Total	6,996	8,027	1,031	15%	6,662	8291	1,629	24%
Talladega - Talladega	Traffic	8,159	12,108	3,949	48%	7,760	10484	2,724	35%
	Criminal	1,836	1,659	-177	-10%	1,856	1709	-147	-8%
	Small Claims	962	903	-59	-6%	707	874	167	24%
	Civil	281	357	76	27%	252	309	57	23%
	Juvenile	558	375	-183	-33%	448	377	-71	-16%
	Child Support	688	687	-1	0%	707	493	-214	-30%
	Total	12,484	16,089	3,605	29%	11,730	14246	2,516	21%
Talladega - Sylacauga	Traffic	1,559	4,894	3,335	214%	1,319	4249	2,930	222%
	Criminal	1,511	1,470	-41	-3%	1,463	1473	10	1%
	Small Claims	1,095	1,189	94	9%	897	1211	314	35%
	Civil	270	264	-6	-2%	265	271	6	2%
	Juvenile	490	368	-122	-25%	465	343	-122	-26%
	Child Support	508	532	24	5%	326	381	55	17%
	Total	5,433	8,717	3,284	60%	4,735	7928	3,193	67%
Talladega Totals	Traffic	9,718	17,002	7,284	75%	9,079	14733	5,654	62%
	Criminal	3,347	3,129	-218	-7%	3,319	3182	-137	-4%
	Small Claims	2,057	2,092	35	2%	1,604	2085	481	30%
	Civil	551	621	70	13%	517	580	63	12%
	Juvenile	1,048	743	-305	-29%	913	720	-193	-21%
	Child Support	1,196	1,219	23	2%	1,033	874	-159	-15%
	Total	17,917	24,806	6,889	38%	16,465	22174	5,709	35%
Tallapoosa - Dadeville	Traffic	2,226	2,956	730	33%	1,863	2082	219	12%
	Criminal	928	1,081	153	16%	828	924	96	12%
	Small Claims	436	387	-49	-11%	348	341	-7	-2%
	Civil	121	138	17	14%	96	126	30	31%
	Juvenile	496	412	-84	-17%	448	383	-65	-15%
	Child Support	144	97	-47	-33%	132	58	-74	-56%
	Total	4,351	5,071	720	17%	3,715	3914	199	5%
Tallapoosa - Alex City	Traffic	1,179	2,137	958	81%	1,107	1224	117	11%
	Criminal	899	1,117	218	24%	883	987	104	12%
	Small Claims	711	627	-84	-12%	642	510	-132	-21%
	Civil	374	326	-48	-13%	338	258	-80	-24%
	Juvenile	480	364	-116	-24%	463	338	-125	-27%
	Child Support	218	211	-7	-3%	167	189	22	13%
	Total	3,861	4,782	921	24%	3,600	3506	-94	-3%
Tallapoosa Totals	Traffic	3,405	5,093	1,688	50%	2,970	3306	336	11%
	Criminal	1,827	2,198	371	20%	1,711	1911	200	12%
	Small Claims	1,147	1,014	-133	-12%	990	851	-139	-14%
	Civil	495	464	-31	-6%	434	384	-50	-12%
	Juvenile	976	776	-200	-20%	911	721	-190	-21%
	Child Support	362	308	-54	-15%	299	247	-52	-17%
	Total	8,212	9,853	1,641	20%	7,315	7420	105	1%

Table 2: District Court Caseload Statistics, Fiscal Years 2006 and 2007

County	Jurisdiction	Filed in 06	Filed in 07	Change 06-07		Disp. in 06	Disp. in 07	Change 06-07	
Tuscaloosa	Traffic	26,690	27,492	802	3%	24,588	28,236	3,648	15%
	Criminal	7,530	7,318	-212	-3%	7,253	7472	219	3%
	Small Claims	3,997	4,193	196	5%	3,856	4451	595	15%
	Civil	1,938	1,927	-11	-1%	1,928	1895	-33	-2%
	Total	40,155	40,930	775	2%	37,625	42054	4,429	12%
Walker	Traffic	6,014	10,834	4,820	80%	4,652	10836	6,184	133%
	Criminal	2,819	2,567	-252	-9%	2,732	2449	-283	-10%
	Small Claims	1,159	1,117	-42	-4%	1,025	1028	3	0%
	Civil	481	520	39	8%	548	443	-105	-19%
	Child Support	476	363	-113	-24%	496	403	-93	-19%
	Total	10,949	15,401	4,452	41%	9,453	15159	5,706	60%
Washington	Traffic	3,784	5,470	1,686	45%	3,492	5014	1,522	44%
	Criminal	930	914	-16	-2%	830	896	66	8%
	Small Claims	306	331	25	8%	345	261	-84	-24%
	Civil	68	78	10	15%	63	62	-1	-2%
	Juvenile	125	109	-16	-13%	125	101	-24	-19%
	Child Support	376	311	-65	-17%	265	243	-22	-8%
	Total	5,589	7,213	1,624	29%	5,120	6577	1,457	28%
Wilcox	Traffic	3,167	3,420	253	8%	2,679	3,507	828	31%
	Criminal	636	594	-42	-7%	657	594	-63	-10%
	Small Claims	324	241	-83	-26%	223	284	61	27%
	Civil	71	78	7	10%	72	82	10	14%
	Juvenile	232	235	3	1%	211	186	-25	-12%
	Child Support	297	508	211	71%	191	236	45	24%
	Total	4,727	5,076	349	7%	4,033	4,889	856	21%
Winston	Traffic	3,597	5,572	1,975	55%	2,988	5,901	2,913	97%
	Criminal	1,456	1,265	-191	-13%	1,539	1,349	-190	-12%
	Small Claims	397	325	-72	-18%	404	464	60	15%
	Civil	139	157	18	13%	154	211	57	37%
	Juvenile	165	182	17	10%	135	213	78	58%
	Child Support	97	125	28	29%	95	125	30	32%
	Total	5,851	7,626	1,775	30%	5,315	8,263	2,948	55%

***** ALABAMA STATEWIDE DISTRICT COURT TOTALS *****

		Cases Filed		Change 2006-2007		Cases Disposed		Change 2006-2007	
Jurisdiction		2006	2007	# +/-	%	2006	2007	# +/-	%
Statewide	Traffic	456,180	602,531	146,351	32%	425,158	566,625	141,467	33%
	Criminal	192,420	192,576	156	0%	189,019	189,265	246	0%
	Small Claims	107,447	106,596	-851	-1%	103,154	106,209	3,055	3%
	Civil	45,929	46,841	912	2%	46,725	43,433	-3,292	-7%
	Juvenile	36,717	34,937	-1,780	-5%	34,500	33,036	-1,464	-4%
	Child Support	24,079	23,673	-406	-2%	22,641	22,876	235	1%
TOTALS		862,788	1,007,154	144,366	17%	821,197	961,444	140,247	17%

Table 3: Jury Trials as a Percent of Case Dispositions, Fiscal Years 2006 and 2007

Circuit	Counties	FY 2006 Criminal			FY 2006 Civil			FY 2007 Criminal			FY 2007 Civil		
		Trials	Dispositions	Pct	Trials	Dispositions	Pct	Trials	Dispositions	Pct	Trials	Dispositions	Pct
1st	Choctaw, Clarke, and Washington	10	1069	0.93%	3	520	0.57%	13	899	1.44%	3	573	0.52%
2nd	Butler, Crenshaw, and Lowndes	35	942	3.71%	5	404	1.23%	17	846	2.00%	1	453	0.22%
3rd	Barbour, Bullock	8	733	1.09%	4	482	0.82%	3	569	0.52%	3	390	0.76%
4th	Bibb, Dallas, Hale, Perry and Wilcox	16	1217	1.31%	2	960	0.20%	16	1344	1.19%	8	1079	0.74%
5th	Chambers, Macon, Randolph and Tallapoosa	41	1577	2.59%	9	1341	0.67%	28	1716	1.63%	12	1085	1.10%
6th	Tuscaloosa	32	3249	0.98%	21	1762	1.19%	35	3907	0.89%	20	1801	1.11%
7th	Calhoun and Cleburne	17	3082	0.55%	11	1121	0.98%	17	3202	0.53%	14	1021	1.37%
8th	Morgan	70	1977	3.54%	17	923	1.84%	70	1925	3.63%	18	895	2.01%
9th	Cherokee and Dekalb	9	1669	0.53%	5	547	0.91%	13	1689	0.76%	5	558	0.89%
10th	Birmingham and Bessemer	291	8302	3.50%	136	7649	1.77%	241	7502	3.21%	98	7145	1.37%
		62	1843	3.36%	7	1511	0.46%	26	1792	1.45%	18	1893	0.95%
11th	Lauderdale	37	758	4.88%	15	616	2.43%	39	1059	3.68%	17	645	2.63%
12th	Coffee and Pike	39	1858	2.09%	13	855	1.52%	39	2267	1.72%	5	1031	0.48%
13th	Mobile	119	8368	1.42%	54	4489	1.20%	114	7765	1.46%	45	4092	1.09%
14th	Walker	9	677	1.32%	3	780	0.38%	3	485	0.61%	6	737	0.81%
15th	Montgomery	89	2612	3.40%	24	3511	0.68%	83	2534	3.27%	16	3488	0.45%
16th	Etowah	21	1588	1.32%	11	1687	0.65%	8	2388	0.33%	8	1410	0.56%
17th	Greene, Marengo and Sumter	12	529	2.26%	10	386	2.59%	14	394	3.55%	10	418	2.39%
18th	Shelby	14	1677	0.83%	10	1660	0.60%	18	2348	0.76%	7	1738	0.40%
19th	Autauga, Chilton Elmore	31	1968	1.57%	9	1522	0.59%	29	1871	1.54%	12	1424	0.84%
20th	Henry, Houston	74	4049	1.82%	11	1229	0.89%	107	4642	2.30%	14	1082	1.29%
21st	Escambia	5	608	0.82%	3	319	0.94%	5	639	0.78%	4	259	1.54%
22nd	Covington	33	683	4.83%	4	283	1.41%	28	751	3.72%	5	274	1.82%
23rd	Madison	34	8056	0.42%	35	2597	1.34%	43	8850	0.48%	25	2629	0.95%
24th	Fayette, Lamar and Pickens	0	1028	0.00%	4	387	1.03%	1	833	0.12%	2	375	0.53%
25th	Marion, Winston	24	656	3.65%	8	402	1.99%	14	658	2.12%	5	430	1.16%
26th	Russell	44	1610	2.73%	5	478	1.04%	35	1421	2.46%	4	449	0.89%
27th	Marshall	3	1241	0.24%	3	838	0.35%	1	970	0.10%	6	708	0.84%
28th	Baldwin	72	4024	1.78%	30	1263	2.37%	80	3930	2.03%	20	1848	1.08%
29th	Talladega	22	1276	1.72%	6	774	0.77%	29	1575	1.84%	9	778	1.15%
30th	St. Clair	11	1129	0.97%	13	673	1.93%	6	1043	0.57%	9	790	1.13%
31st	Colbert	9	613	1.46%	8	571	1.40%	6	678	0.88%	5	480	1.04%
32nd	Cullman	13	525	2.47%	2	703	0.28%	10	505	1.98%	5	613	0.81%
33rd	Dale and Geneva	39	1435	2.71%	4	526	0.76%	12	1427	0.84%	4	534	0.74%
34th	Franklin	12	548	2.18%	3	358	0.83%	13	471	2.76%	2	274	0.72%
35th	Conecuh, Monroe	6	299	2.00%	7	296	2.36%	3	381	0.78%	4	328	1.21%
36th	Lawrence	11	707	1.55%	3	230	1.30%	7	936	0.74%	3	239	1.25%
37th	Lee	33	1756	1.87%	7	887	0.78%	44	1603	2.74%	10	890	1.12%
38th	Jackson	1	1093	0.09%	5	375	1.33%	3	925	0.32%	2	344	0.58%
39th	Limestone	4	766	0.52%	4	529	0.75%	1	1009	0.09%	3	666	0.45%
40th	Clay and Coosa	4	550	0.72%	1	154	0.64%	10	514	1.94%	0	223	0.00%
41st	Blount	5	737	0.67%	8	386	2.07%	13	692	1.87%	1	341	0.29%
Statewide Totals		1,421	79,084	1.79%	543	46,984	1.15%	1,297	80,955	1.60%	468	46,430	1.00%

Note: Includes jury trial begun no verdict

Table 4: Jury Expenses, Fiscal Years 2003 - 2007

Circuit	Counties	FY 2003		FY 2004		FY 2005		FY 2006		FY 2007*	
		Trials	Expenses	Trials	Expenses	Trials	Expenses	Trials	Expenses	Trials	Expenses
1st	Choctaw, Clarke, and Washington	25	\$22,400	24	\$20,590	12	\$20,710	13	\$20,810	16	\$25,869
2nd	Butler, Crenshaw, and Lowndes	34	\$14,840	22	\$10,100	27	\$22,260	40	\$15,290	18	\$12,714
3rd	Barbour, Bullock	16	\$10,560	13	\$12,840	5	\$6,850	12	\$11,900	6	\$11,157
4th	Bibb, Dallas, Hale, Perry and Wilcox	42	\$47,220	30	\$40,000	21	\$30,800	18	\$39,270	24	\$51,704
5th	Chambers, Macon, Randolph and Tallapoosa	57	\$72,400	39	\$52,950	48	\$61,250	50	\$68,490	40	\$83,152
6th	Tuscaloosa	82	\$48,630	65	\$35,470	67	\$45,950	53	\$50,510	55	\$64,610
7th	Calhoun and Cleburne	42	\$49,280	35	\$33,080	47	\$42,950	28	\$41,470	31	\$50,436
8th	Morgan	99	\$40,440	75	\$30,160	120	\$59,010	87	\$43,380	88	\$58,321
9th	Cherokee and Dekalb	11	\$11,380	12	\$8,260	34	\$10,320	14	\$9,510	18	\$16,558
10th	Birmingham Bessemer	453	\$342,560	405	\$226,260	436	\$259,520	427	\$274,030	339	\$279,953
		55	\$67,430	37	\$45,520	40	\$49,540	69	\$55,400	44	\$51,542
11th	Lauderdale	67	\$27,370	50	\$21,260	30	\$19,750	52	\$30,570	56	\$39,331
12th	Coffee, Pike	37	\$24,160	36	\$17,950	19	\$19,830	52	\$27,270	44	\$25,978
13th	Mobile	234	\$153,990	168	\$92,600	168	\$110,580	173	\$133,610	159	\$190,375
14th	Walker	8	\$21,880	4	\$8,920	5	\$16,030	12	\$14,490	9	\$16,550
15th	Montgomery	107	\$121,030	79	\$68,460	106	\$90,280	113	\$91,720	99	\$98,828
16th	Etowah	64	\$72,030	40	\$41,570	56	\$50,330	32	\$50,980	16	\$52,807
17th	Greene, Marengo and Sumter	29	\$14,650	28	\$11,100	18	\$14,130	22	\$14,930	24	\$17,263
18th	Shelby	26	\$44,590	30	\$34,210	33	\$38,080	24	\$33,800	25	\$36,430
19th	Autauga, Chilton Elmore	85	\$38,790	56	\$14,810	43	\$31,120	40	\$36,290	41	\$45,434
20th	Henry, Houston	150	\$106,980	109	\$92,840	155	\$101,990	85	\$151,810	121	\$119,532
21st	Escambia	15	\$8,170	7	\$7,990	10	\$6,090	8	\$8,930	9	\$16,494
22nd	Covington	65	\$24,970	57	\$17,280	44	\$19,360	37	\$22,620	33	\$25,844
23rd	Madison	61	\$62,710	75	\$45,920	69	\$52,650	69	\$61,120	68	\$85,503
24th	Fayette, Lamar and Pickens	6	\$10,780	15	\$11,170	8	\$17,130	4	\$7,990	3	\$16,228
25th	Marion, Winston	20	\$24,550	38	\$16,420	27	\$16,210	32	\$15,070	19	\$18,929
26th	Russell	41	\$14,440	39	\$13,420	52	\$16,590	49	\$19,810	39	\$23,924
27th	Marshall	25	\$38,830	10	\$17,070	8	\$23,280	6	\$32,870	7	\$34,296
28th	Baldwin	173	\$86,630	90	\$46,410	108	\$63,660	102	\$60,480	100	\$89,305
29th	Talladega	32	\$19,590	35	\$17,360	51	\$20,900	28	\$15,470	38	\$26,075
30th	St. Clair	23	\$17,010	18	\$11,040	12	\$11,940	24	\$22,480	15	\$33,361
31st	Colbert	19	\$16,000	25	\$17,090	29	\$15,930	17	\$15,240	11	\$18,224
32nd	Cullman	16	\$16,970	5	\$10,390	17	\$12,190	15	\$16,630	15	\$19,311
33rd	Dale, Geneva	30	\$24,830	28	\$15,230	37	\$25,280	43	\$26,630	16	\$21,074
34th	Franklin	18	\$11,350	10	\$9,470	15	\$11,800	15	\$11,390	15	\$14,775
35th	Conecuh, Monroe	7	\$15,380	23	\$13,560	13	\$11,200	13	\$10,870	7	\$12,392
36th	Lawrence	18	\$8,510	4	\$3,420	10	\$7,290	14	\$10,190	10	\$10,386
37th	Lee	49	\$27,230	29	\$20,510	36	\$22,700	40	\$29,210	54	\$39,271
38th	Jackson	7	\$12,050	10	\$10,500	12	\$7,660	6	\$10,980	5	\$10,818
39th	Limestone	9	\$15,180	3	\$6,200	6	\$11,530	8	\$10,280	4	\$12,281
40th	Clay, Coosa	18	\$7,920	10	\$6,150	20	\$8,220	5	\$5,830	10	\$8,137
41st	Blount	39	\$19,360	33	\$12,960	15	\$14,960	13	\$17,210	14	\$11,667
Statewide Totals		2,414	\$1,835,070	1,921	\$1,248,510	2,089	\$1,497,850	1,964	\$1,646,830	1,765	\$1,896,839

* The FY 2007 Jury Expenses include a one time round trip mileage paid which was not included in previous years.

Table 5: Jury Cost Per Trial, Fiscal Years 2003 - 2007

Circuit	Counties	FY 2003	FY 2004	FY 2005	FY 2006	FY 2007*	% of Change 2006-2007
1st	Choctaw, Clarke, and Washington	\$896	\$858	\$1,726	\$1,601	\$1,617	1%
2nd	Butler, Crenshaw, and Lowndes	\$413	\$459	\$825	\$382	\$706	85%
3rd	Barbour, Bullock	\$660	\$988	\$1,370	\$1,082	\$1,860	72%
4th	Bibb, Dallas, Hale, Perry and Wilcox	\$1,149	\$1,333	\$1,467	\$2,310	\$2,248	-3%
5th	Chambers, Macon, Randolph and Tallapoosa	\$1,248	\$1,358	\$1,276	\$1,370	\$2,079	52%
6th	Tuscaloosa	\$593	\$546	\$686	\$935	\$1,175	26%
7th	Calhoun and Cleburne	\$1,173	\$945	\$914	\$1,481	\$1,627	10%
8th	Morgan	\$408	\$402	\$492	\$499	\$663	33%
9th	Cherokee and DeKalb	\$875	\$688	\$304	\$679	\$920	35%
10th	Birmingham	\$761	\$559	\$595	\$640	\$828	29%
	Bessemer	\$1,226	\$1,230	\$1,239	\$791	\$1,171	48%
11th	Lauderdale	\$409	\$425	\$658	\$588	\$702	19%
12th	Coffee and Pike	\$653	\$499	\$1,044	\$524	\$590	13%
13th	Mobile	\$658	\$551	\$658	\$772	\$1,220	58%
14th	Walker	\$2,735	\$2,230	\$3,206	\$1,208	\$1,839	52%
15th	Montgomery	\$1,131	\$867	\$852	\$812	\$988	22%
16th	Etowah	\$1,125	\$1,039	\$899	\$1,545	\$3,106	101%
17th	Greene, Marengo and Sumter	\$509	\$396	\$782	\$711	\$719	1%
18th	Shelby	\$1,648	\$1,140	\$1,154	\$1,536	\$1,457	-5%
19th	Autauga, Chilton Elmore	\$1,405	\$264	\$724	\$907	\$1,136	25%
20th	Henry and Houston	\$713	\$852	\$658	\$1,829	\$988	-46%
21st	Escambia	\$545	\$1,141	\$609	\$1,276	\$1,833	44%
22nd	Covington	\$384	\$303	\$440	\$611	\$784	28%
23rd	Madison	\$1,045	\$612	\$763	\$899	\$1,239	38%
24th	Fayette, Lamar and Pickens	\$2,156	\$745	\$214	\$1,998	\$5,409	171%
25th	Marion and Winston	\$1,368	\$432	\$600	\$502	\$996	98%
26th	Russell	\$344	\$344	\$319	\$404	\$613	52%
27th	Marshall	\$1,557	\$1,707	\$2,910	\$5,478	\$4,899	-11%
28th	Baldwin	\$498	\$516	\$589	\$599	\$893	49%
29th	Talladega	\$612	\$496	\$410	\$573	\$705	23%
30th	St. Clair	\$740	\$613	\$995	\$937	\$2,224	137%
31st	Colbert	\$847	\$684	\$549	\$896	\$1,657	85%
32nd	Cullman	\$1,061	\$2,078	\$717	\$1,109	\$1,287	16%
33rd	Dale and Geneva	\$827	\$544	\$683	\$605	\$1,317	118%
34th	Franklin	\$631	\$947	\$787	\$759	\$985	30%
35th	Conecuh and Monroe	\$2,563	\$590	\$862	\$836	\$1,770	112%
36th	Lawrence	\$568	\$855	\$729	\$728	\$1,039	43%
37th	Lee	\$616	\$707	\$631	\$730	\$714	-2%
38th	Jackson	\$1,086	\$1,050	\$639	\$1,830	\$2,164	18%
39th	Limestone	\$2,368	\$2,067	\$1,922	\$1,285	\$3,070	139%
40th	Clay and Coosa	\$1,122	\$615	\$411	\$1,166	\$814	-30%
41st	Blount	\$828	\$393	\$997	\$1,324	\$833	-37%
Statewide Totals		\$753	\$760	\$717	\$842	\$1,077	28%

* The FY 2007 Jury Cost Per Trial includes a one time round trip mileage paid which was not included in previous years.

Table 6: Municipal Court Caseload Statistics, FY 2007

Table 6: Municipal Court Caseload Statistics, FY 2007								
County	Municipality	Population	Cases Filed			Cases Disposed		
			Traffic	Non-Traffic	Total	Traffic	Non-Traffic	Total
BALDWIN	Daphne	21,000	2,979	547	3,526	3,503	642	4,145
	Elberta	1,200	1,220	161	1,381	1,077	172	1,249
	Fairhope	12,500	1,613	1,281	2,894	1,601	964	2,565
	Foley	9,500	5,197	1,984	7,181	4,278	1,870	6,148
	Gulf Shores	6,000	1,916	1,201	3,117	1,956	1,243	3,199
	Orange Beach	5,330	1,926	531	2,457	1,868	526	2,394
	Robertsdale	3,991	5,851	824	6,675	5,527	560	6,087
	Silverhill	620	259	46	305	284	60	344
	Summerdale	655	3,598	407	4,005	3,062	347	3,409
BARBOUR	Eufaula	14,000	3,258	671	3,929	3,098	615	3,713
BIBB	Brent	4,447	545	311	856	602	337	939
	Centreville	2,466	673	145	818	516	136	652
	Woodstock	800	536	185	721	437	141	578
BLOUNT	Blountsville	1,768	601	198	799	532	165	697
	Snead	783	852	191	1,043	693	127	820
CALHOUN	Anniston	24,276	8,041	3,094	11,135	8,222	3,079	11,301
	Jacksonville	8,404	1,518	689	2,207	1,661	687	2,348
	Ohatchee	1,215	1,642	57	1,699	1,423	28	1,451
	Oxford	21,000	783	993	1,776	811	1,016	1,827
	Piedmont	5,700	783	286	1,069	669	219	888
CHEROKEE	Centre	3,216	501	101	602	531	122	653
CHILTON	Clanton	8,000	1,097	567	1,664	885	476	1,361
	Jemison	2,278	1,482	646	2,128	1,275	483	1,758
	Maplesville	672	1,172	150	1,322	873	67	940
CHOCTAW	Gilbertown	188	103	50	153	92	46	138
	Pennington	300	32	38	78	28	29	57
	Silas	558	96	3	99	96	1	97
	Toxey	152	13	0	13	0	0	0
CLARKE	Fulton	600	44	6	50	5	0	5
	Jackson	5,419	1,439	158	1,597	1,519	205	1,724
CLAY	Lineville	2,424	848	248	1,096	773	265	1,038
COFFEE	Enterprise	22,000	2,304	997	3,301	1,766	778	2,544
COLBERT	Cherokee	1,237	448	88	536	355	51	406
	Muscle Shoals	11,924	2,765	614	3,379	2,301	397	2,698
	Tuscumbia	9,500	1,374	333	1,707	927	163	1,090
CONECUH	Evergreen	3,680	1,068	241	1,309	938	214	1,152
COVINGTON	Lockhart	548	199	9	208	0	0	0
	Opp	7,500	1,761	416	2,177	1,697	388	2,085
CRENSHAW	Brantley	950	1,552	40	1,592	1,337	18	1,355
	Luverne	2,675	1,007	192	1,199	1,150	157	1,307
CULLMAN	Cullman	15,000	2,998	597	3,595	3,378	599	3,977
DALE	Daleville	5,117	2,164	575	2,739	2,259	730	2,989
	Midland City	2,800	1,054	155	1,209	1,091	164	1,255
	Napier Field	450	308	31	339	245	22	267
	Newton	1,708	1,027	58	1,085	876	47	923
DEKALB	Fort Payne	12,938	4,379	1,295	5,674	4,076	1,261	5,337
	Geraldine	791	169	42	211	128	40	168
	Hammondville	486	156	6	162	144	7	151
	Powell	926	88	11	99	88	11	99
	Rainsville	4,499	649	242	891	791	277	1,068
ELMORE	Millbrook	14,000	1,962	608	2,570	1,672	433	2,105
	Tallassee	4,934	1,121	640	1,761	1,473	713	2,186
	Wetumpka	6,500	1,854	389	2,243	1,767	342	2,109
ESCAMBIA	Atmore	7,676	1,356	424	1,780	1,312	465	1,777
	Brewton	5,498	840	531	1,371	759	516	1,275

Table 6: Municipal Court Caseload Statistics, FY 2007

County	Municipality	Population	Filed Traffic	Filed Non-Traffic	Total	Disp. Traffic	Disp. Non-Traffic	Total
ETOWAH	Attalla	6,859	1,710	977	2,687	1,633	1,021	2,654
	Gadsden	38,978	4,658	2,484	7,142	0	0	0
	Glencoe	5,152	1,194	159	1,353	1,025	163	1,188
	Hokes Bluff	4,092	684	75	759	649	42	691
	Rainbow City	10,000	1,475	620	2,095	1,247	513	1,760
	Southside	8,118	1,411	323	1,734	1,464	285	1,749
FAYETTE	Berry	1,238	366	73	439	335	69	404
	Fayette	4,922	1,628	241	1,869	1,425	216	1,641
FRANKLIN	Phil Campbell	1,090	130	32	162	130	32	162
	Red Bay	3,451	390	216	606	369	198	567
	Russellville	9,000	3,248	476	3,724	3,186	567	3,753
GENEVA	Geneva	4,388	134	110	244	154	106	260
	Hartford	2,500	408	199	607	479	256	735
	Samson	2,137	272	188	460	259	162	421
	Slocomb	2,100	349	197	546	321	155	476
GREENE	Eutaw	3,000	509	137	646	509	137	646
HALE	Greensboro	2,731	523	270	793	379	165	544
HENRY	Headland	5,101	1,308	195	1,503	1,213	159	1,372
HOUSTON	Cottonwood	1,170	798	26	824	663	28	691
	Gordon	408	1,279	1	1,280	1,203	2	1,205
JACKSON	Bridgeport	1,000	719	137	856	524	111	635
	Scottsboro	14,500	2,546	1,538	4,084	2,342	1,312	3,654
	Section	769	286	100	386	266	75	341
JEFFERSON	Bessemer	29,672	6,465	5,292	11,757	5,272	3,306	8,578
	Brookside	1,400	396	44	440	280	38	318
	Gardendale	13,000	2,399	1,330	3,729	2,397	1,105	3,502
	Hueytown	20,000	3,773	1,101	4,874	2,776	719	3,495
	Irondale	12,500	2,751	527	3,278	2,680	657	3,337
	Kimberly	1,801	391	236	627	304	93	397
	Lipscomb	2,458	1,046	248	1,294	0	0	0
	Morris	1,827	1,170	278	1,448	1,121	156	1,277
	Mountain Brook	20,000	4,103	313	4,416	4,687	401	5,088
	Trussville	18,500	3,616	1,243	4,859	3,581	1,237	4,818
LAUDERDALE	Killen	1,118	869	82	951	899	77	976
	Rogersville	1,199	1,119	84	1,203	876	47	923
LAWRENCE	Courtland	769	138	37	175	118	33	151
	Moulton	3,260	2,623	475	3,098	2,049	377	2,426
	Town Creek	1,250	1,352	129	1,481	1,035	74	1,109
LEE	Auburn	51,906	14,361	2,632	16,993	13,932	2,448	16,380
LIMESTONE	Athens	19,500	7,975	894	8,869	4,831	250	7,439
LOWNDES	Hayneville	1,177	76	0	76	0	0	0
	White Hall	4,000	220	0	220	0	0	0
MADISON	Huntsville	173,189	31,475	26,950	58,425	30,118	23,133	53,251
	Madison	40,000	11,249	887	12,136	11,337	1,127	12,464
	New Hope	2,700	971	322	1,293	924	171	1,095
MARENGO	Demopolis	7,540	1,010	1,330	2,340	0	0	0
	Linden	2,424	621	324	945	553	299	852
MARION	Bear Creek	1,043	86	14	100	67	10	77
	Guin	2,389	50	52	102	37	45	82
	Hackleburg	1,527	363	22	385	259	6	265
	Winfield	4,545	591	144	735	619	130	749
MARSHALL	Albertville	17,247	3,307	1,615	4,922	3,218	1,687	4,905
	Arab	7,100	3,110	859	3,969	2,828	843	3,671
	Boaz	6,928	3,195	1,030	4,225	3,715	1,274	4,989
	Douglas	531	507	146	653	582	157	739
	Grant	665	151	36	187	126	24	150
	Guntersville	7,500	2,821	1,084	3,905	3,542	1,285	4,827

Table 6: Municipal Court Caseload Statistics, FY 2007

County	Municipality	Population	Filed Traffic	Filed Non-Traffic	Total	Disp. Traffic	Disp. Non-Traffic	Total
MOBILE	Bayou La Batre	6,000	571	523	1,094	604	490	1,094
	Dauphin Island	1,300	356	282	638	467	305	772
	Mobile	404,000	55,038	14,085	69,123	51,322	13,967	65,289
	Mount Vernon	1,680	1,365	200	1,565	1,044	127	1,171
	Satsuma	6,000	1,116	574	1,690	1,166	578	1,744
MONROE	Excel	800	231	50	281	231	45	276
MONTGOMERY	Montgomery	201,568	68,978	6,956	75,934	43,716	4,758	48,474
MORGAN	Decatur	53,000	11,900	5,627	17,527	10,686	4,832	15,518
	Falkville	1,202	952	226	1,178	759	136	895
	Hartselle	13,000	3,651	419	4,070	2,864	283	3,147
	Trinity	1,841	1,045	195	1,240	1,073	126	1,199
PERRY	Marion	3,811	770	76	845	429	18	447
PICKENS	Carrollton	987	299	92	391	220	78	298
PIKE	Brundidge	2,341	583	67	650	530	70	600
RANDOLPH	Wedowee	818	319	173	492	293	143	436
RUSSELL	Hurtsboro	707	72	19	91	76	25	101
	Phenix City	29,000	8,020	1,799	9,819	7,190	1,632	8,822
SHELBY	Alabaster	25,000	5,602	893	6,495	5,005	908	5,913
	Columbiana	3,316	920	158	1,078	206	41	247
	Helena	16,000	3,691	438	4,129	3,900	496	4,396
SHELBY	Montevallo	5,000	2,074	412	2,486	2,134	487	2,621
	Vincent	1,853	647	194	841	715	223	938
ST. CLAIR	Argo	1,860	1,241	217	1,458	887	108	995
	Ashville	2,260	442	148	590	372	124	496
	Margaret	1,169	352	137	489	249	58	307
	Odenville	1,131	837	85	922	623	45	668
	Ragland	1,918	294	45	339	258	49	307
	Riverside	1,564	648	56	704	608	55	663
	Springville	2,553	479	89	568	398	80	478
	Steele	1,093	154	31	185	154	24	178
TALLADEGA	Lincoln	5,000	1,480	358	1,838	1,244	270	1,514
	Talladega	18,000	5,102	1,626	6,773	5,019	1,679	6,961
TALLAPOOSA	Dadeville	3,400	504	217	721	697	223	920
TUSCALOOSA	Brookwood	1,483	402	59	461	287	34	321
	Lake View	1,357	430	204	634	401	185	586
	Northport	20,000	3,224	668	3,982	2,678	469	3,147
	Tuscaloosa	90,000	18,779	6,884	25,663	17,713	6,398	24,111
	Vance	1,200	496	71	567	481	50	531
WALKER	Dora	2,500	182	48	230	182	48	230
	Jasper	14,052	3,356	3,550	6,906	3,431	3,550	6,981
	Sumiton	2,665	1,768	708	2,476	1,832	603	2,435
WASHINGTON	Chatom	1,193	95	59	154	95	59	154
	Millry	850	275	121	396	301	110	411
WILCOX	Camden	2,650	144	108	292	6	3	9
	Pine Hill	966	596	101	597	818	151	969
WINSTON	Addison	723	443	116	559	284	74	358
	Arley	290	152	38	190	101	24	125
	Double Springs	1,003	105	41	146	121	61	182
TOTALS			433,776	132,080	565,938	376,835	113,706	493,162